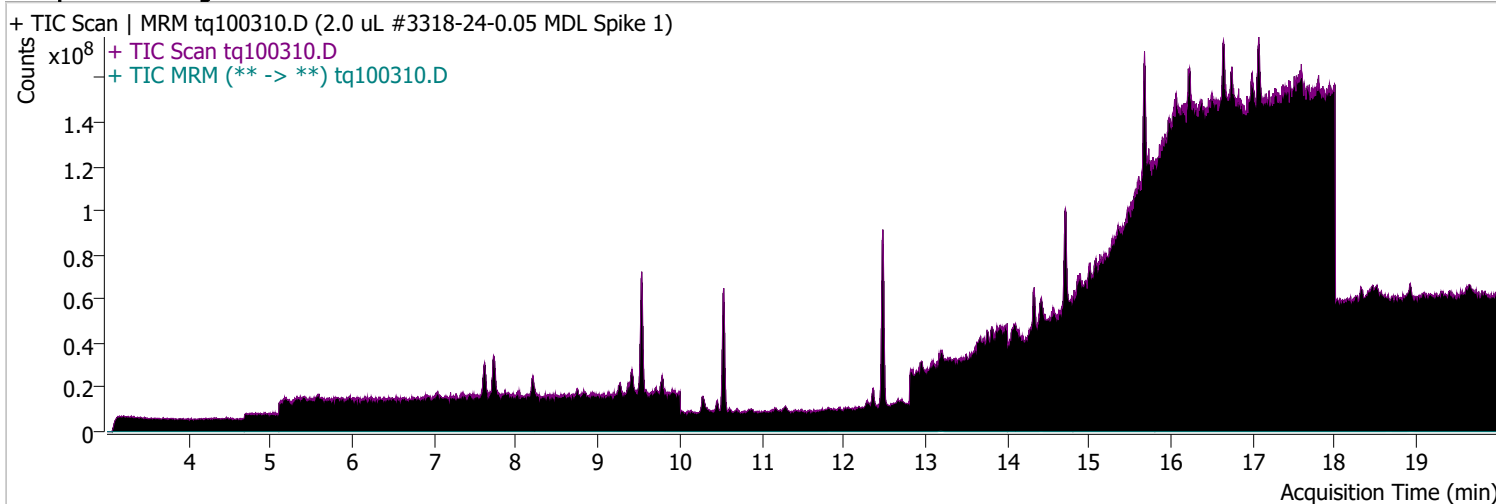


# Quantitative Analysis Sample Report

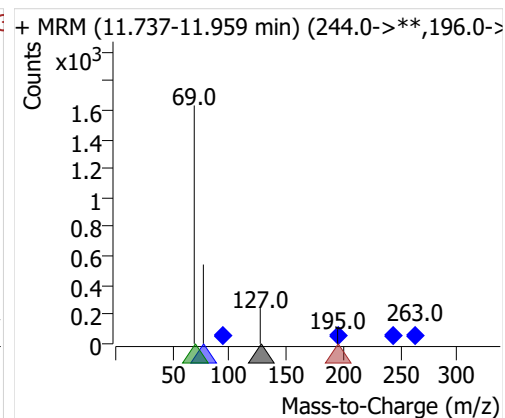
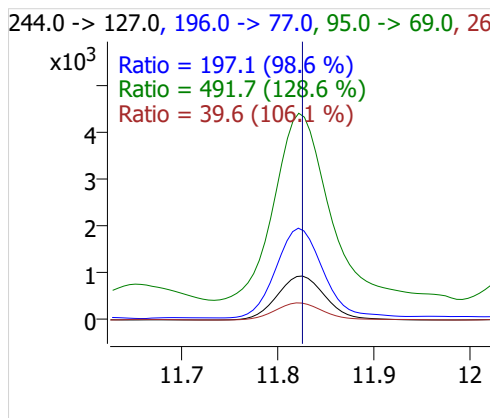
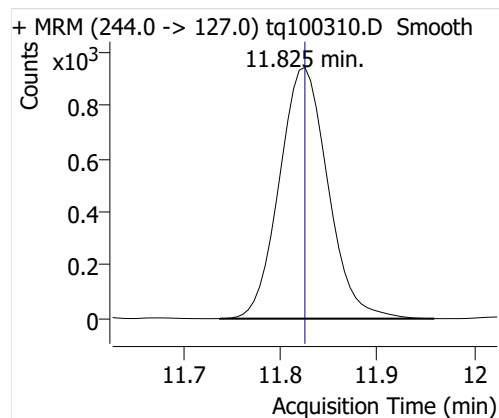
Batch Path	D:\MassHunter\GCMS\1\data\04OCT22\QuantResults\outlier removed MDL spike.batch.bin		
Analysis Time	10/5/2022 8:30 AM	Analyst Name	ES-AREA1\US32_USR_INS22923
Report Time	10/20/2022 2:57:07 PM	Reporter Name	ES-AREA1\US32_USR_INS22923
Last Calib Update	10/3/2022 8:55 AM	Batch State	Processed
Quant Batch Version	10.1	Quant Report Version	10.1
Acq. Time	10/3/2022 4:50 PM	Data File	tq100310.D
Sample Type	QC	Sample Name	2.0 uL #3318-24-0.05 MDL Spike 1
Dilution	1	Acq. Method	tq22m0930marks

## Sample Chromatogram

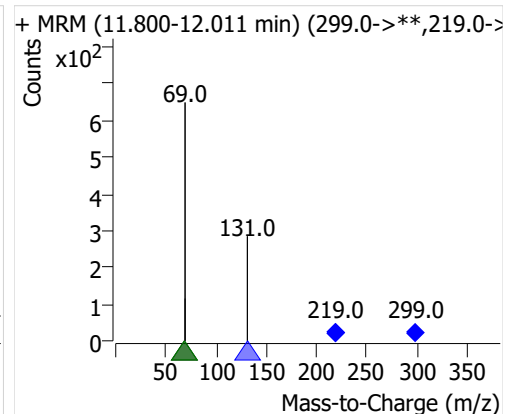
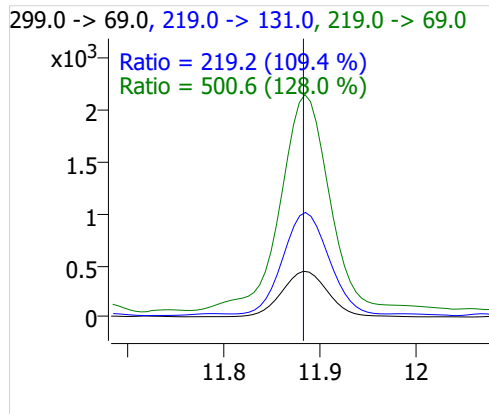
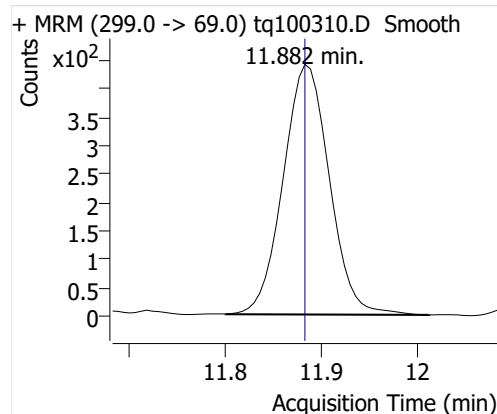


Compound	ISTD	RT	Resp.	ISTD Resp.	Resp. Ratio	Final Conc	Units
4:2 FTOH	6:2 FTOH-C13	11.825	3293	62252	0.0529	0.0962	ng
5:2sFTOH	6:2 FTOH-C13	11.882	1465	62252	0.0235	0.0994	ng
7:2sFTOH	6:2 FTOH-C13	13.183	2607	62252	0.0419	0.0880	ng
6:2 FTOH	6:2 FTOH-C13	13.217	5687	62252	0.0914	0.0905	ng
8:2 FTOH-C13	6:2 FTOH-C13	14.412	22399	62252	0.3598	1.0311	ng
8:2 FTOH	6:2 FTOH-C13	14.413	1193	62252	0.0192	0.0690	ng
10:2 FTOH	6:2 FTOH-C13	15.477	657	62252	0.0106	0.1011	ng
12:2 FTOH	6:2 FTOH-C13	16.458	2676	62252	0.0430	0.1132	ng
NMeFOSA	6:2 FTOH-C13	18.662	2093	62252	0.0336	0.1199	ng
NEtFOSA	6:2 FTOH-C13	18.931	9664	62252	0.1552	0.1265	ng

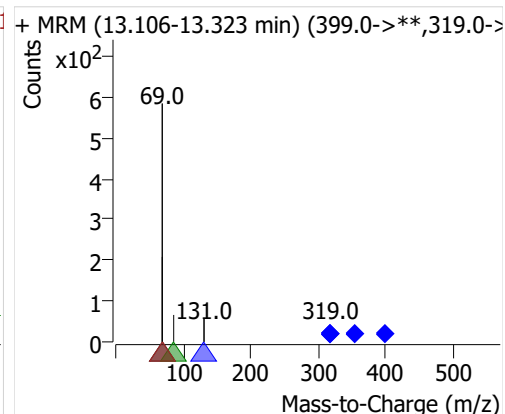
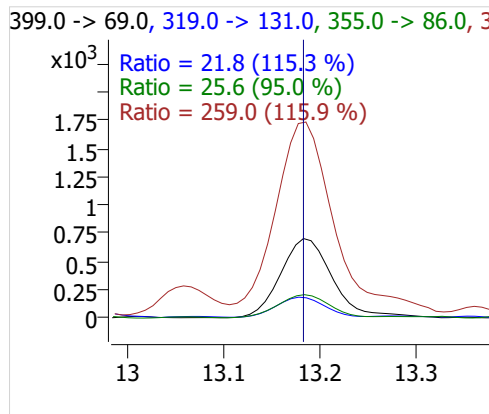
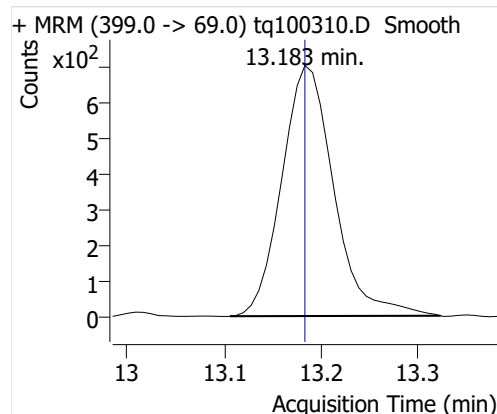
## 4:2 FTOH



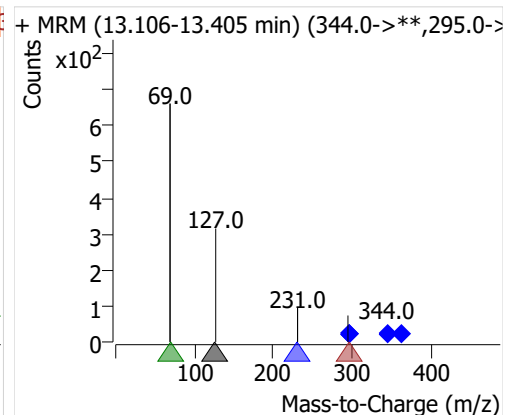
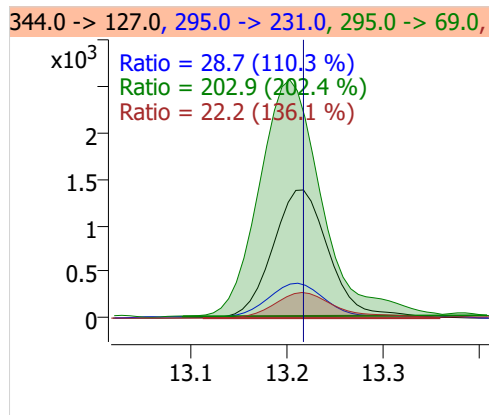
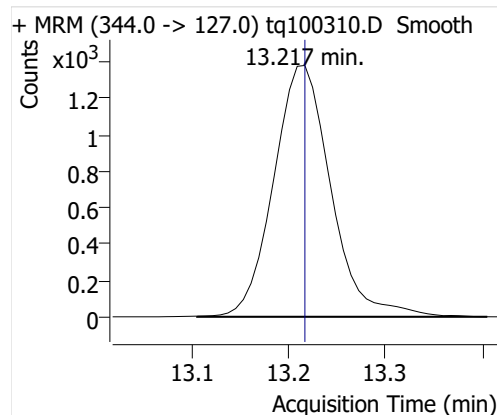
## 5:2sFTOH



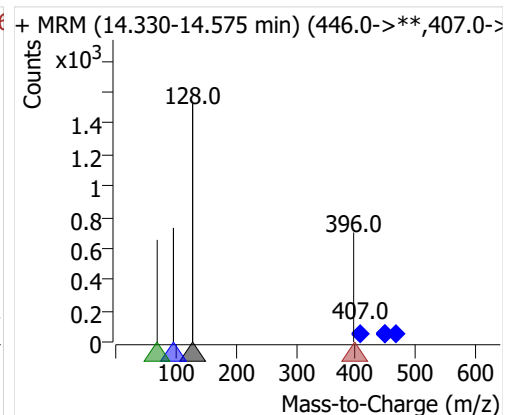
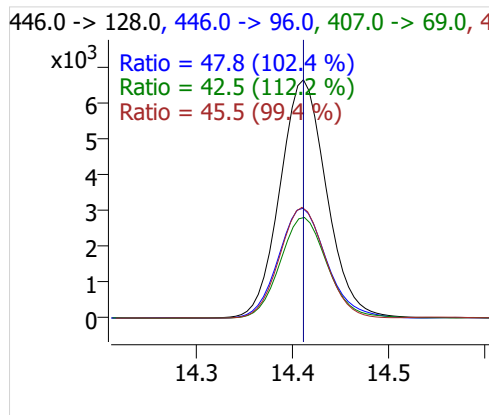
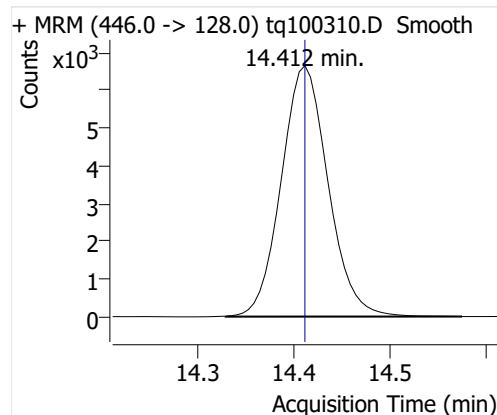
## 7:2sFTOH



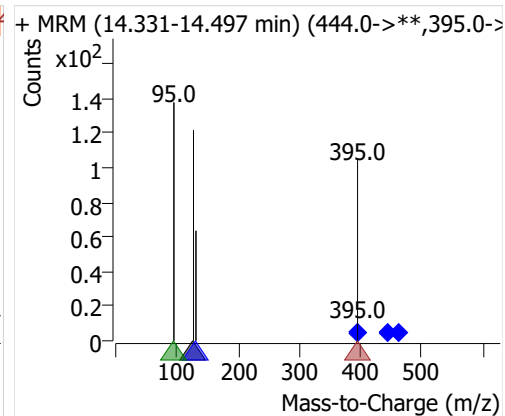
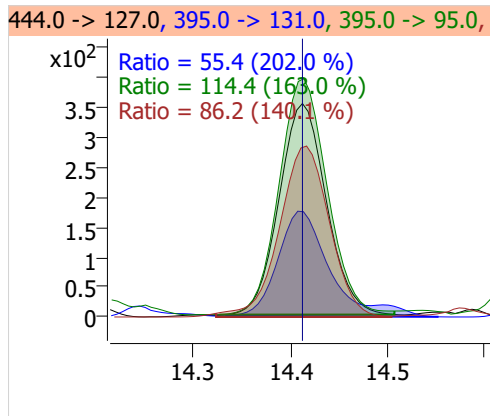
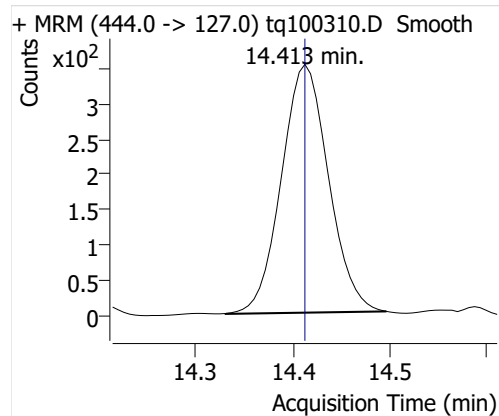
## 6:2 FTOH



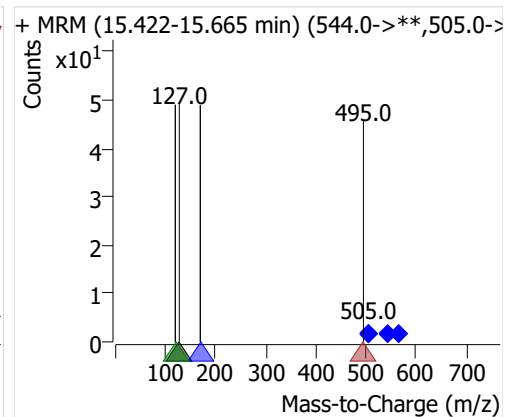
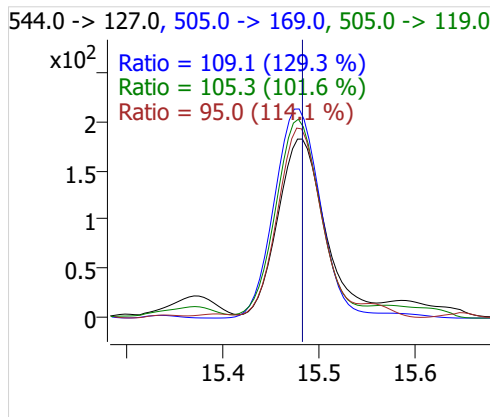
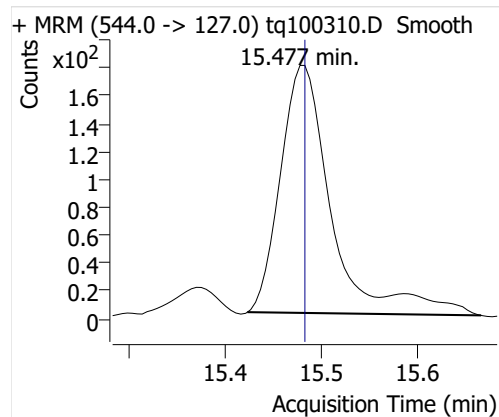
## 8:2 FTOH-C13



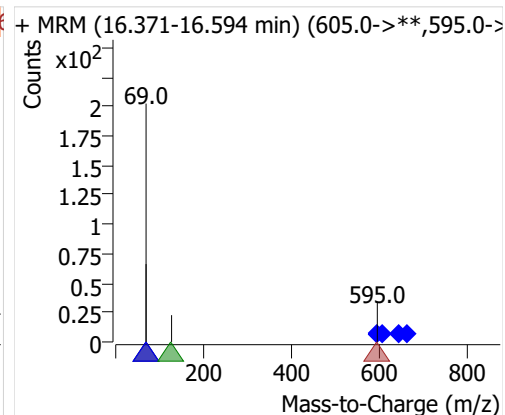
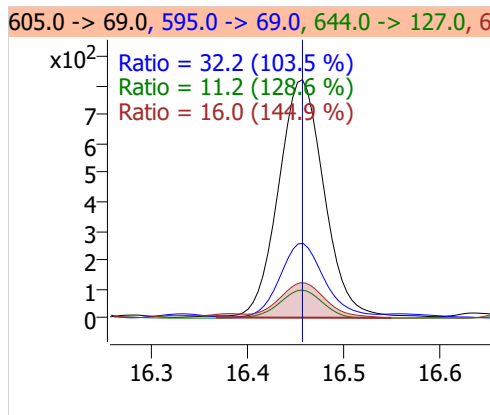
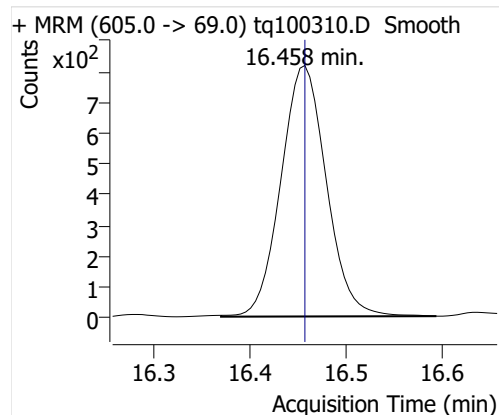
## 8:2 FTOH



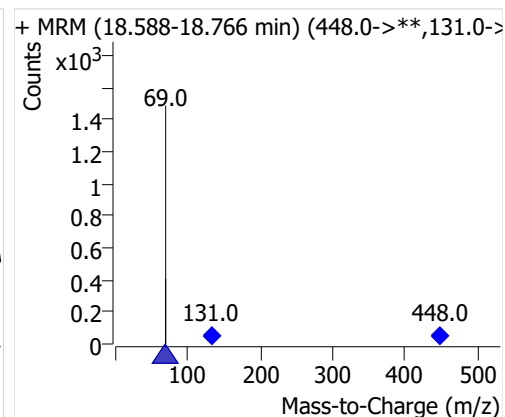
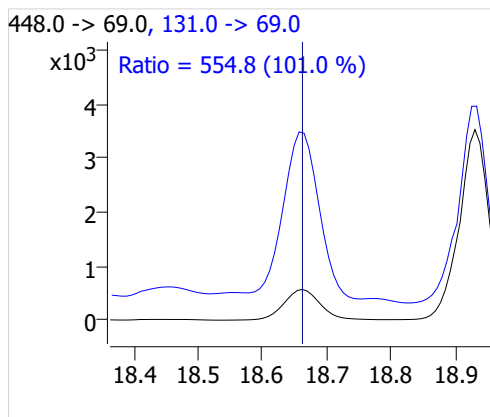
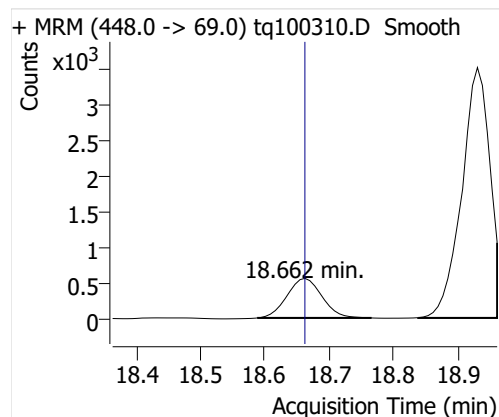
## 10:2 FTOH



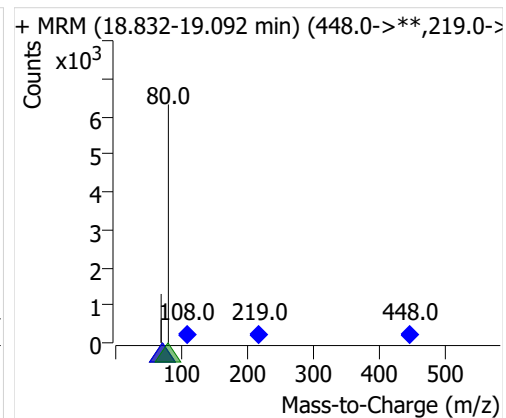
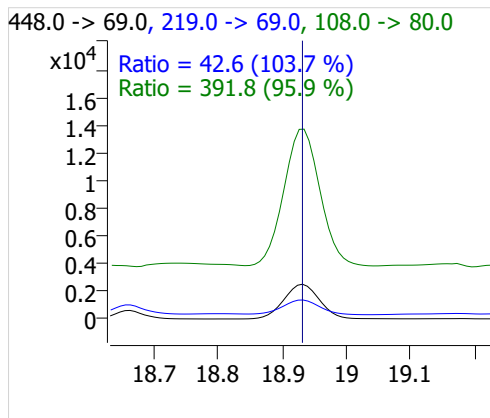
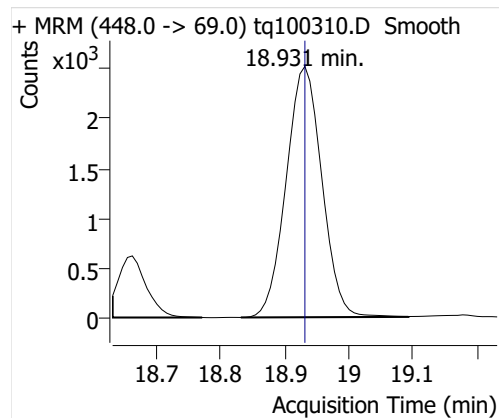
## 12:2 FTOH



## NMeFOSA



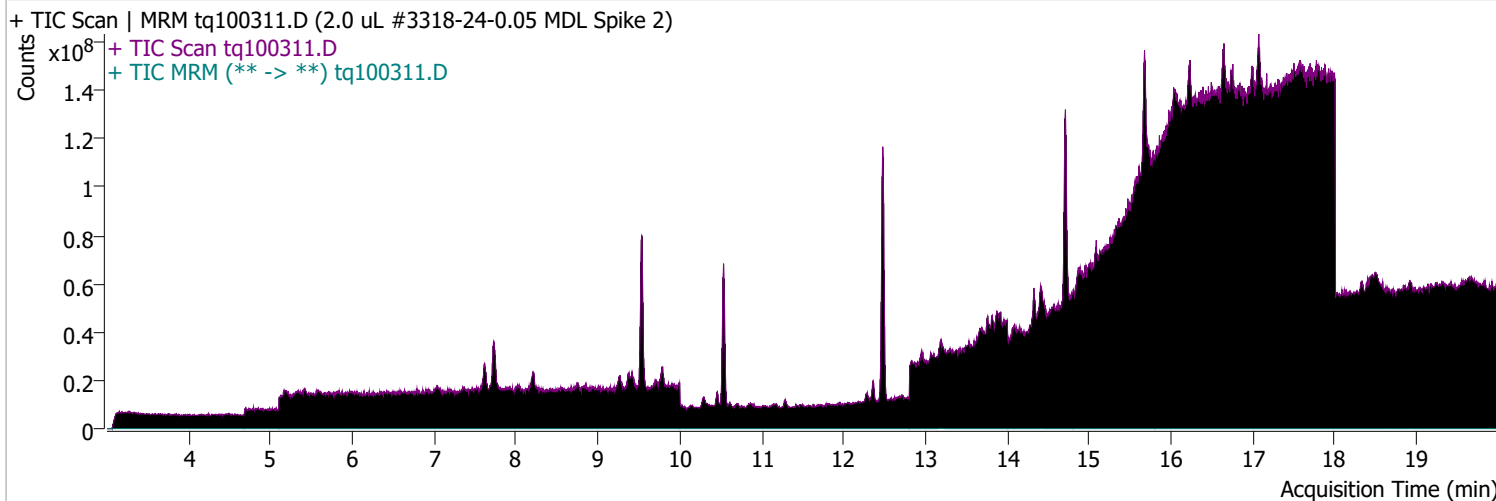
## NETFOSA



# Quantitative Analysis Sample Report

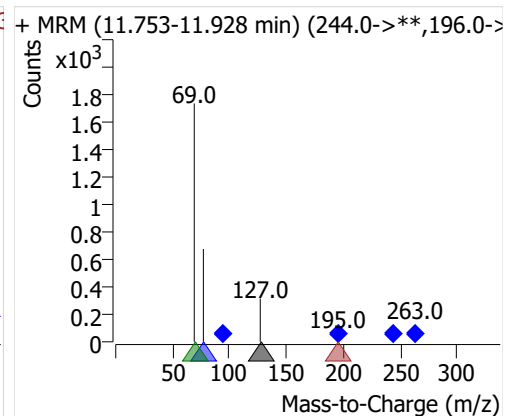
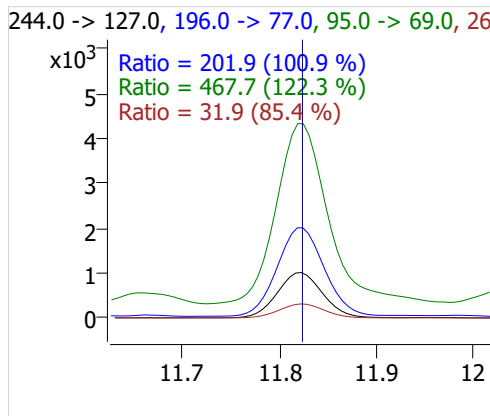
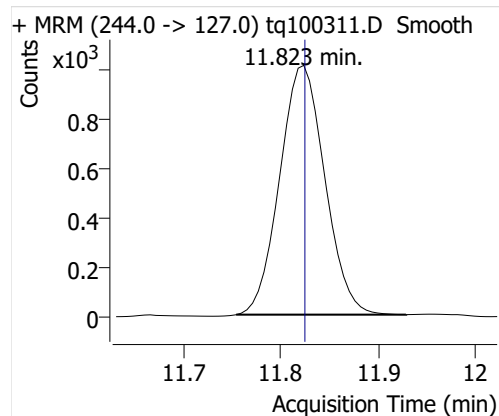
Batch Path	D:\MassHunter\GCMS\1\data\04OCT22\QuantResults\outlier removed MDL spike.batch.bin		
Analysis Time	10/5/2022 8:30 AM	Analyst Name	ES-AREA1\US32_USR_INS22923
Report Time	10/20/2022 2:57:09 PM	Reporter Name	ES-AREA1\US32_USR_INS22923
Last Calib Update	10/3/2022 8:55 AM	Batch State	Processed
Quant Batch Version	10.1	Quant Report Version	10.1
Acq. Time	10/3/2022 5:13 PM	Data File	tq100311.D
Sample Type	QC	Sample Name	2.0 uL #3318-24-0.05 MDL Spike 2
Dilution	1	Acq. Method	tq22m0930marks

## Sample Chromatogram

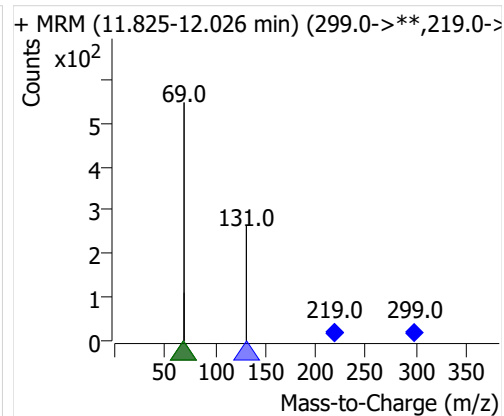
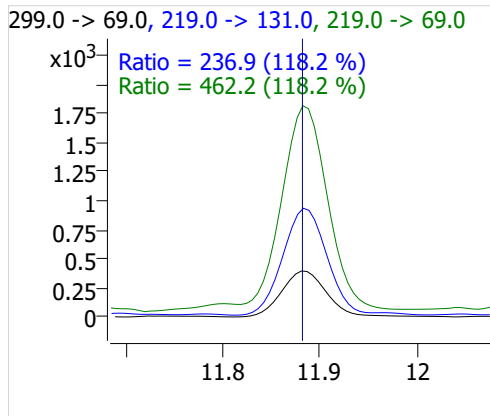
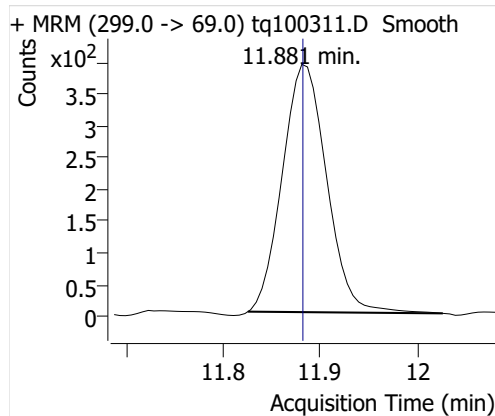


Compound	ISTD	RT	Resp.	ISTD Resp.	Resp. Ratio	Final Conc	Units
4:2 FTOH	6:2 FTOH-C13	11.823	3244	62865	0.0516	0.0939	ng
5:2sFTOH	6:2 FTOH-C13	11.881	1239	62865	0.0197	0.0833	ng
7:2sFTOH	6:2 FTOH-C13	13.182	2878	62865	0.0458	0.0962	ng
6:2 FTOH	6:2 FTOH-C13	13.216	9041	62865	0.1438	0.1424	ng
8:2 FTOH-C13	6:2 FTOH-C13	14.413	22408	62865	0.3565	1.0215	ng
8:2 FTOH	6:2 FTOH-C13	14.413	1929	62865	0.0307	0.1105	ng
10:2 FTOH	6:2 FTOH-C13	15.477	679	62865	0.0108	0.1034	ng
12:2 FTOH	6:2 FTOH-C13	16.458	2258	62865	0.0359	0.0946	ng
NMeFOSA	6:2 FTOH-C13	18.662	1986	62865	0.0316	0.1126	ng
NEtFOSA	6:2 FTOH-C13	18.931	8343	62865	0.1327	0.1081	ng

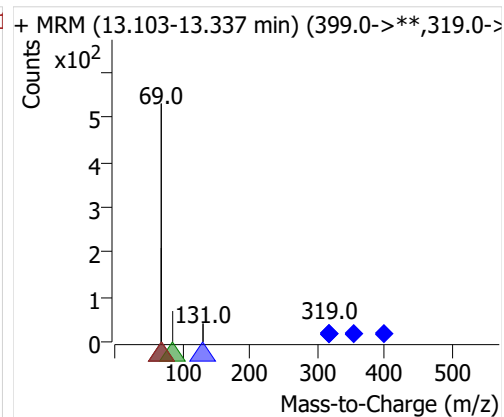
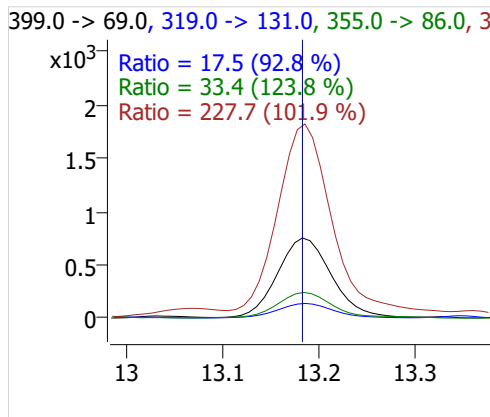
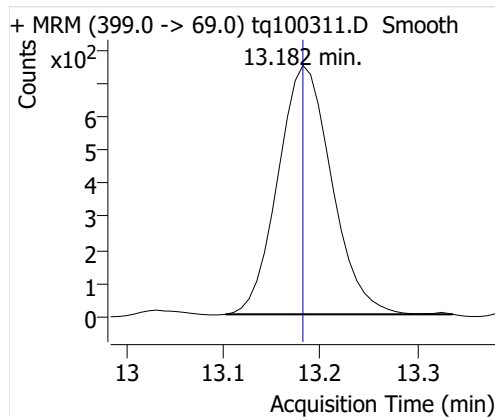
## 4:2 FTOH



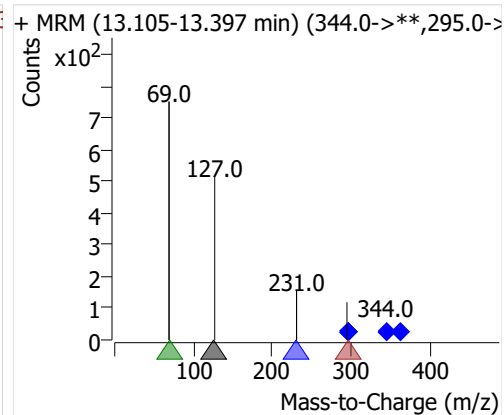
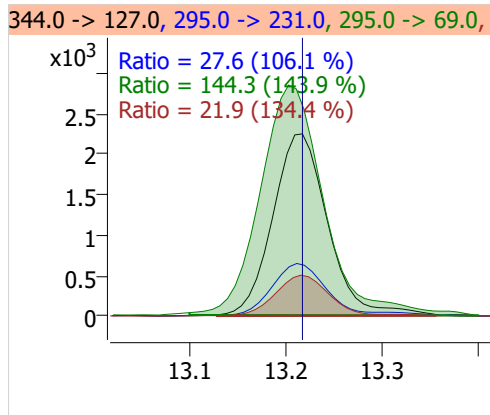
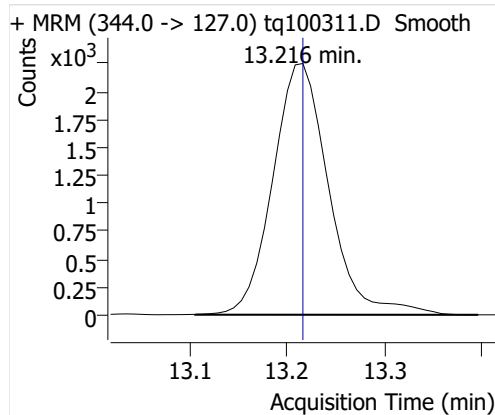
## 5:2sFTOH



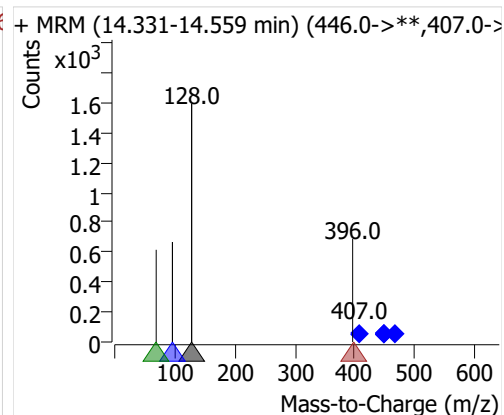
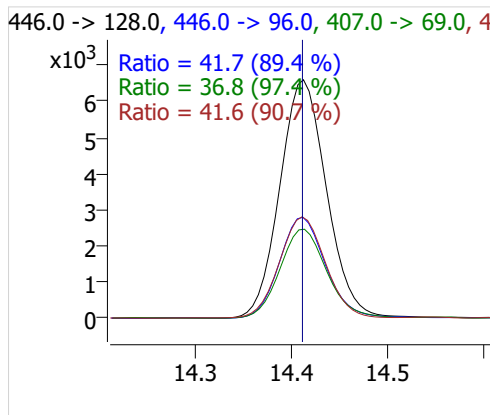
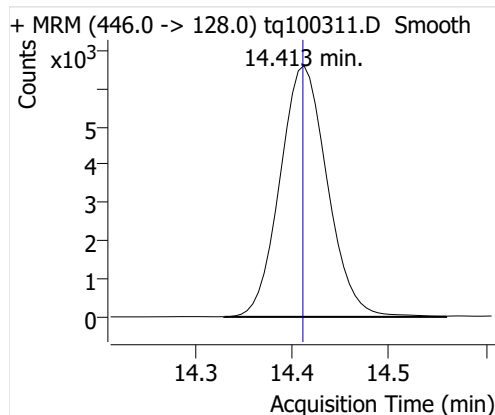
## 7:2sFTOH



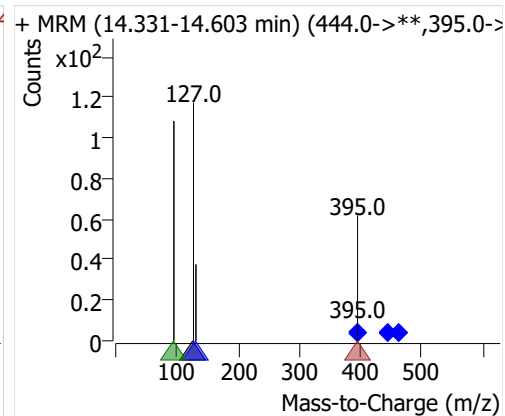
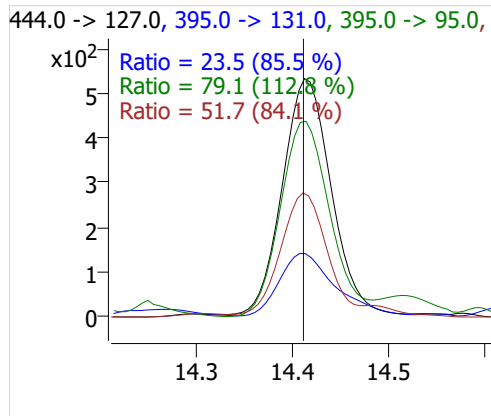
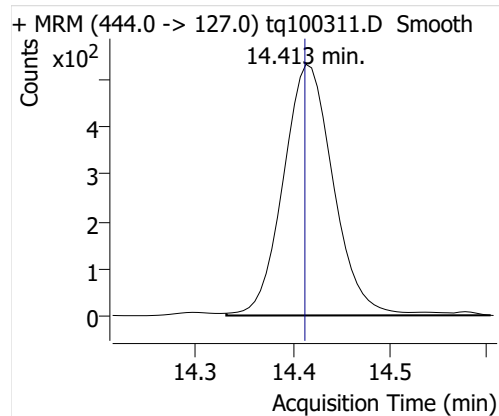
## 6:2 FTOH



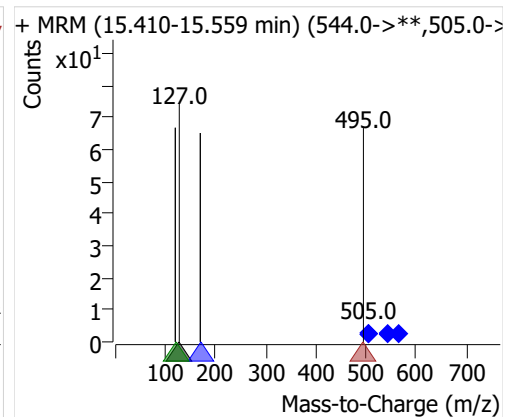
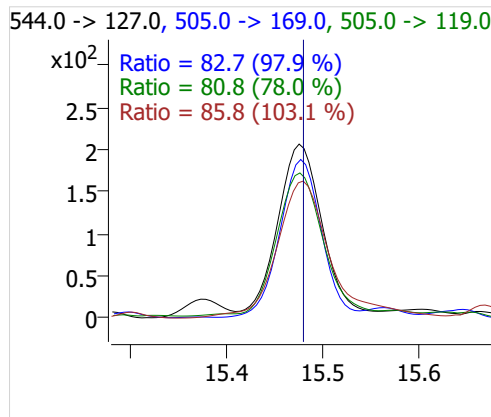
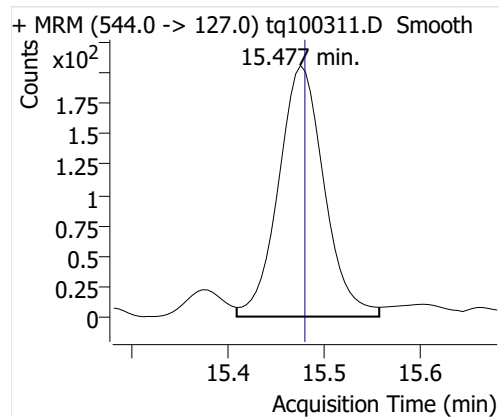
## 8:2 FTOH-C13



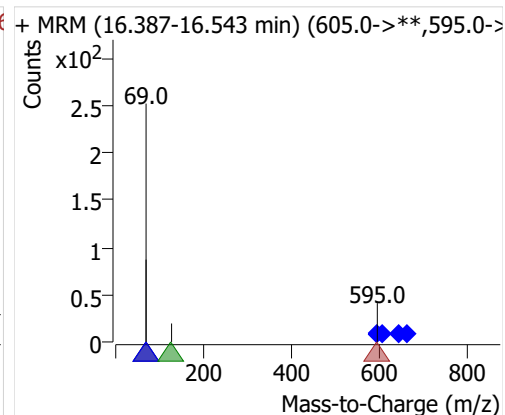
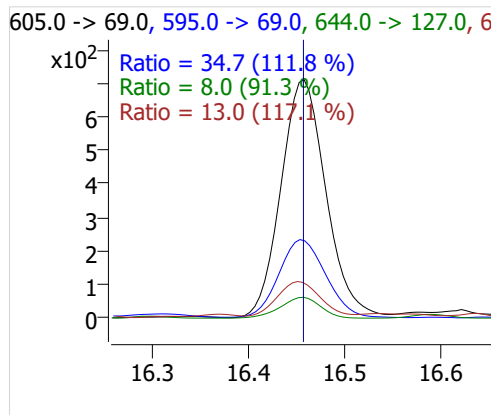
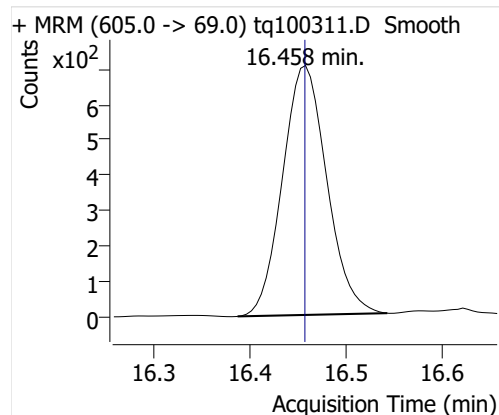
## 8:2 FTOH



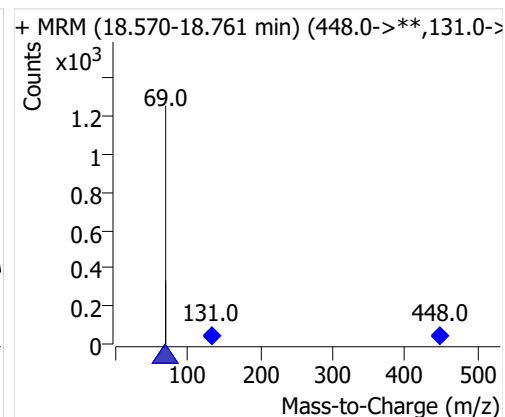
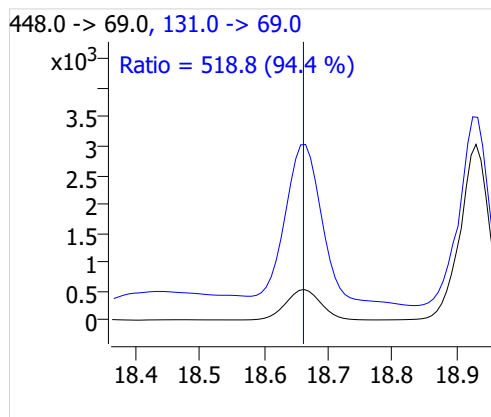
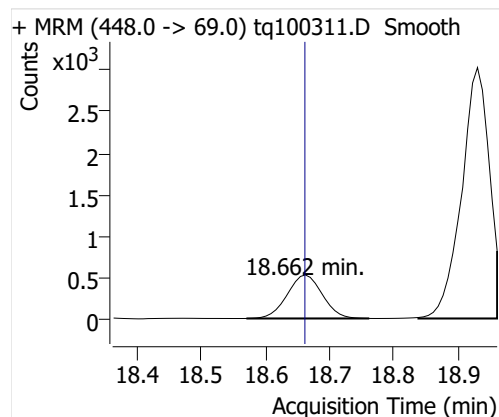
## 10:2 FTOH



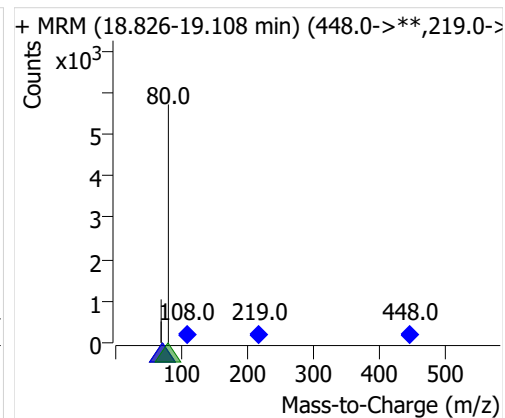
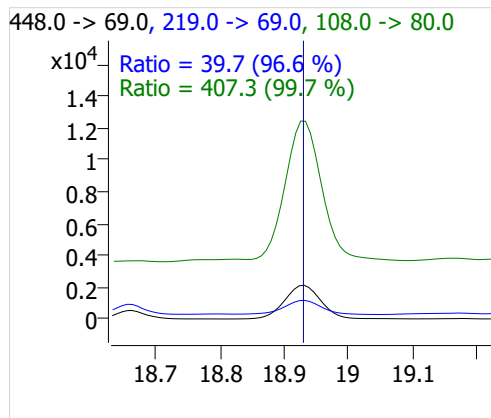
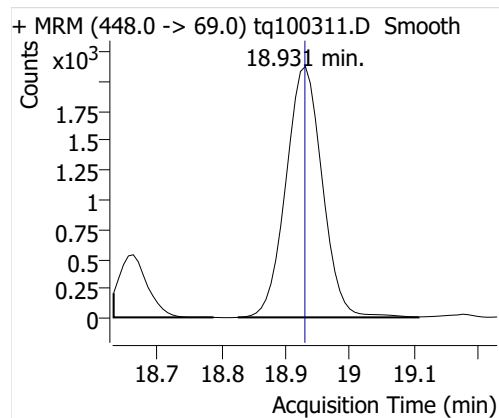
## 12:2 FTOH



## NMeFOSA



## NETFOSA

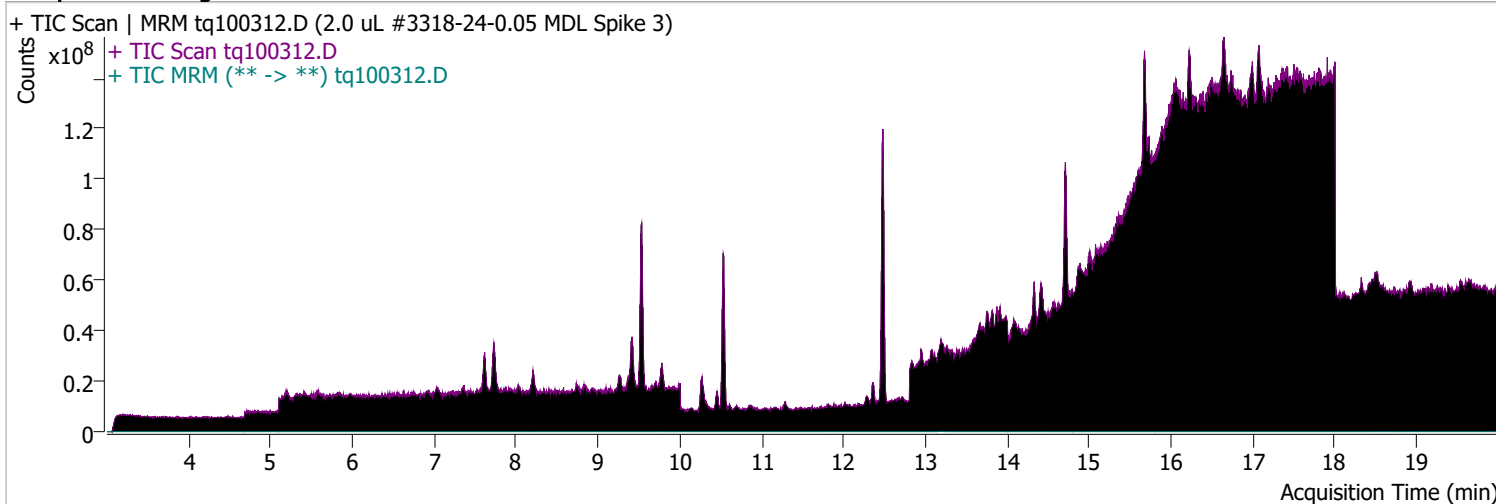




# Quantitative Analysis Sample Report

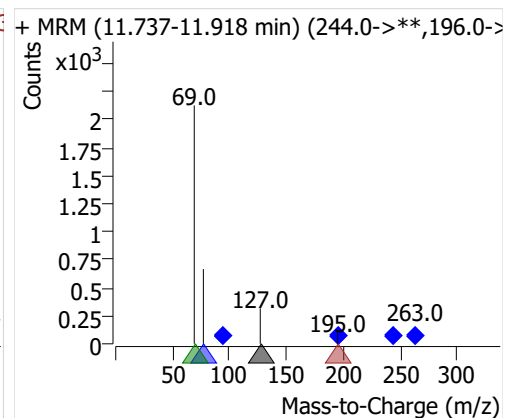
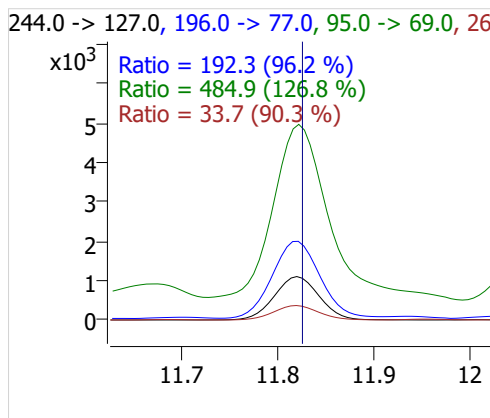
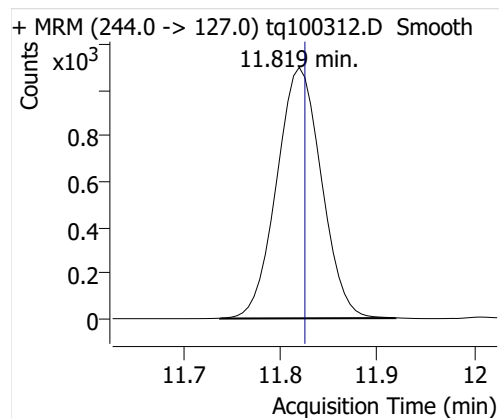
Batch Path	D:\MassHunter\GCMS\1\data\04OCT22\QuantResults\outlier removed MDL spike.batch.bin		
Analysis Time	10/5/2022 8:30 AM	Analyst Name	ES-AREA1\US32_USR_INS22923
Report Time	10/20/2022 2:57:10 PM	Reporter Name	ES-AREA1\US32_USR_INS22923
Last Calib Update	10/3/2022 8:55 AM	Batch State	Processed
Quant Batch Version	10.1	Quant Report Version	10.1
Acq. Time	10/3/2022 5:37 PM	Data File	tq100312.D
Sample Type	QC	Sample Name	2.0 uL #3318-24-0.05 MDL Spike 3
Dilution	1	Acq. Method	tq22m0930marks

## Sample Chromatogram

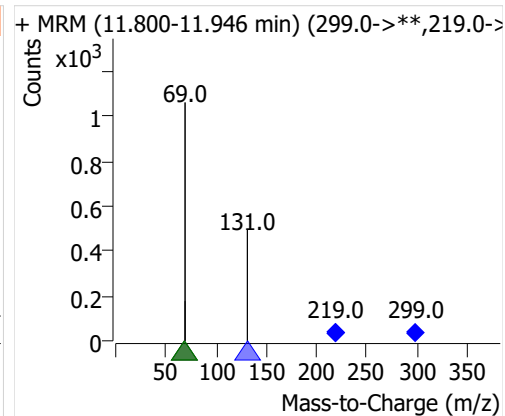
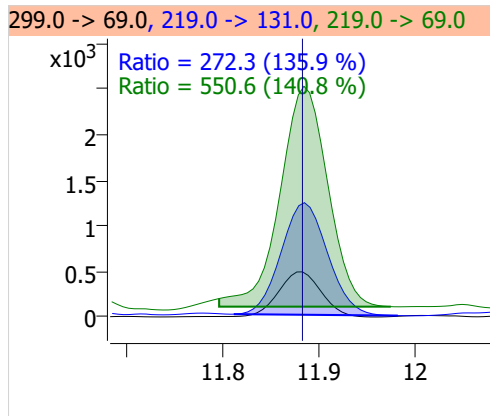
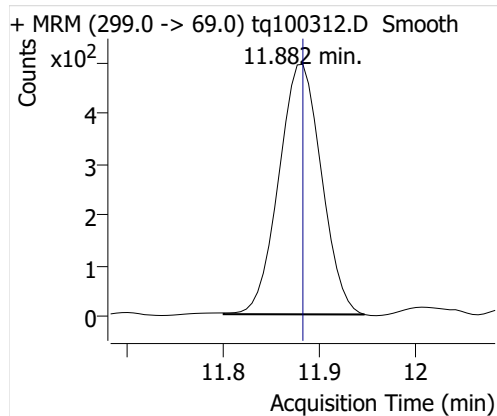


Compound	ISTD	RT	Resp.	ISTD Resp.	Resp. Ratio	Final Conc	Units
4:2 FTOH	6:2 FTOH-C13	11.819	3548	63262	0.0561	0.1020	ng
5:2sFTOH	6:2 FTOH-C13	11.882	1513	63262	0.0239	0.1011	ng
7:2sFTOH	6:2 FTOH-C13	13.183	2420	63262	0.0383	0.0804	ng
6:2 FTOH	6:2 FTOH-C13	13.217	6067	63262	0.0959	0.0950	ng
8:2 FTOH-C13	6:2 FTOH-C13	14.412	22199	63262	0.3509	1.0056	ng
8:2 FTOH	6:2 FTOH-C13	14.413	1897	63262	0.0300	0.1079	ng
10:2 FTOH	6:2 FTOH-C13	15.482	675	63262	0.0107	0.1021	ng
12:2 FTOH	6:2 FTOH-C13	16.458	2541	63262	0.0402	0.1058	ng
NMeFOSA	6:2 FTOH-C13	18.662	2145	63262	0.0339	0.1209	ng
NEtFOSA	6:2 FTOH-C13	18.931	8878	63262	0.1403	0.1143	ng

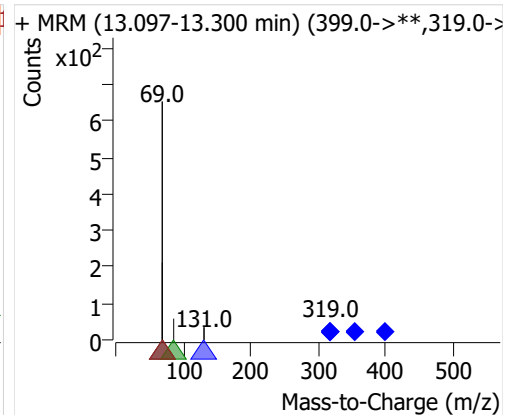
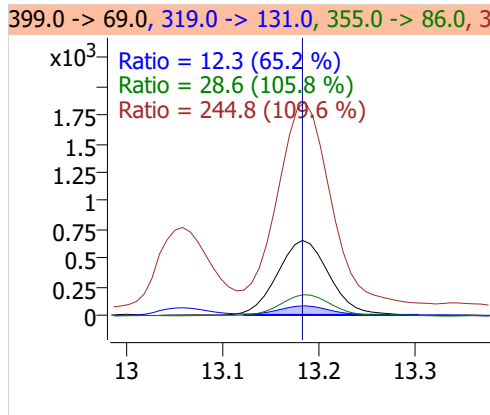
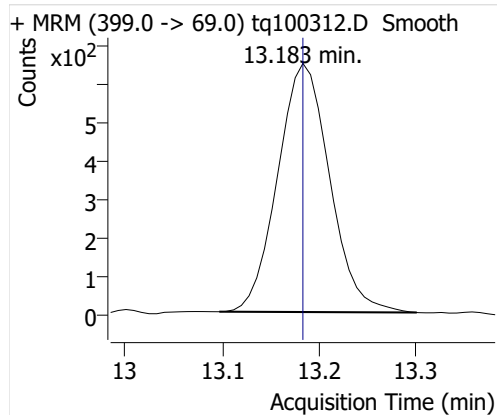
## 4:2 FTOH



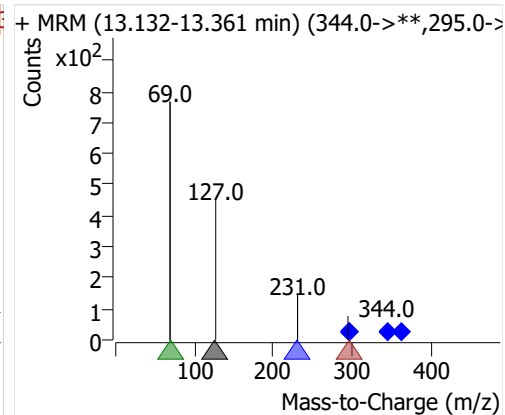
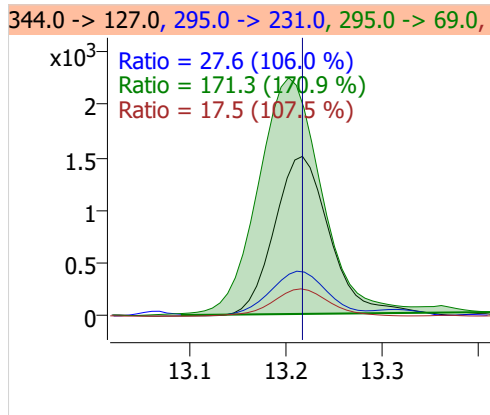
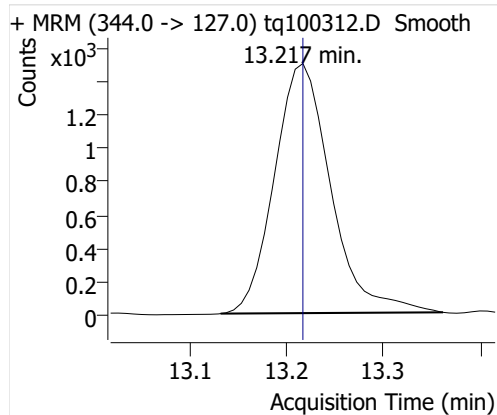
## 5:2sFTOH



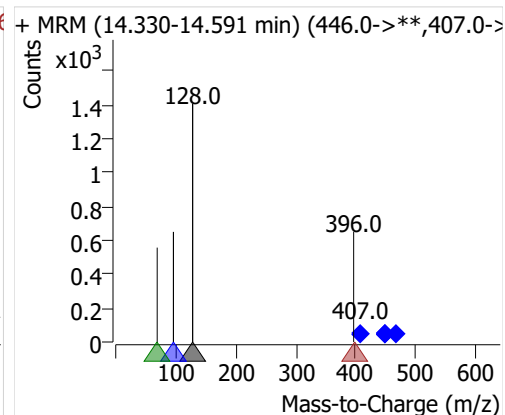
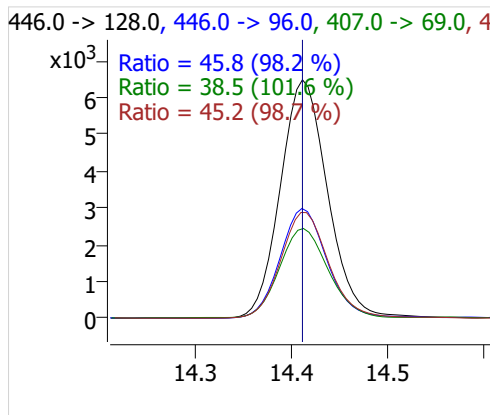
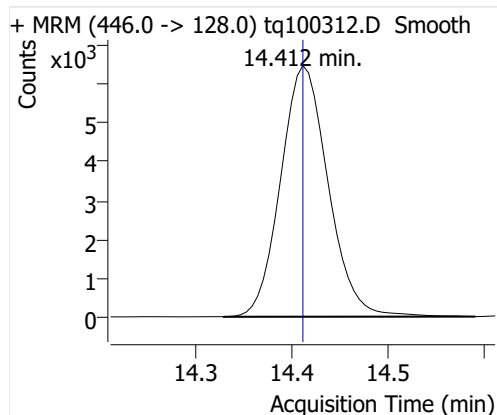
## 7:2sFTOH



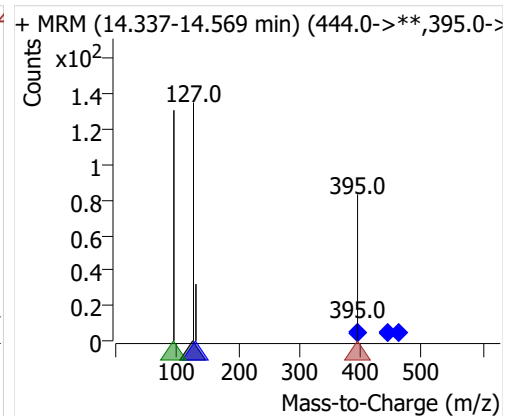
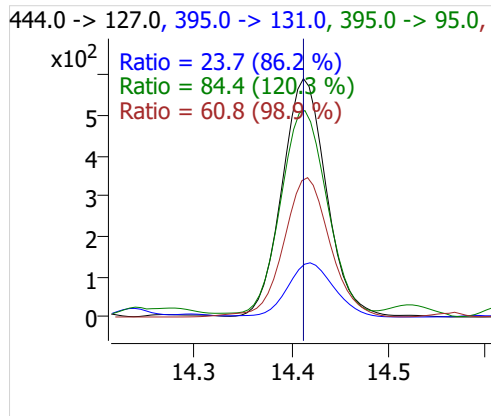
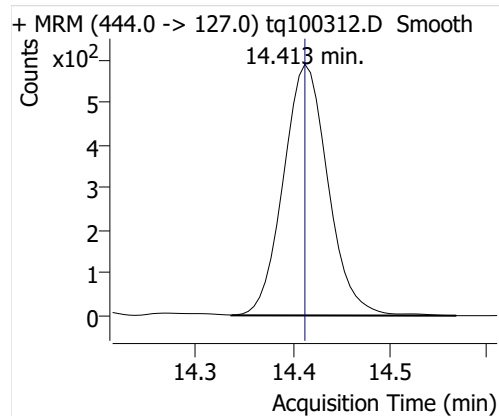
## 6:2 FTOH



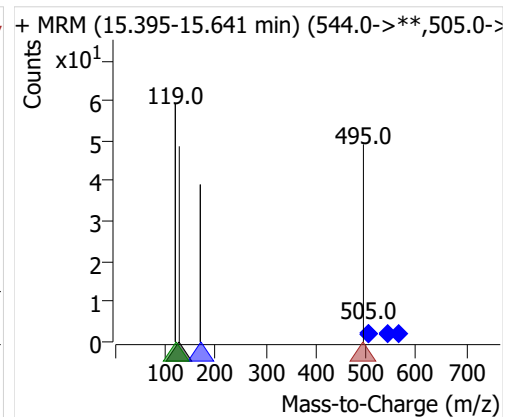
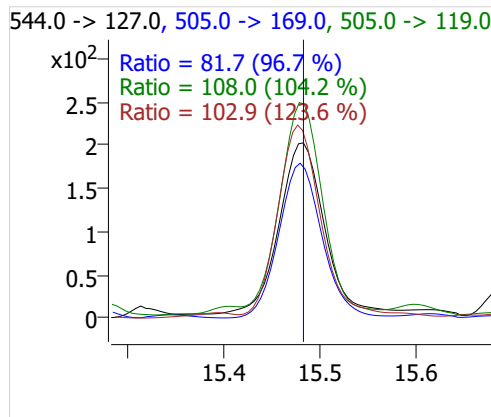
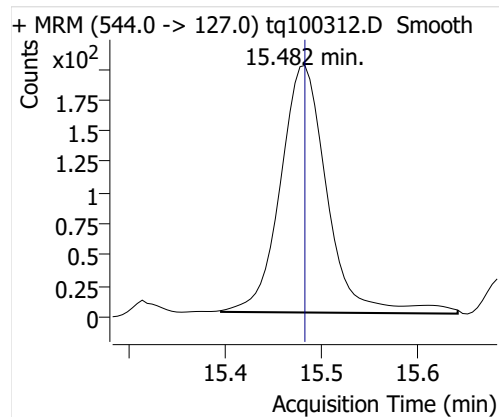
## 8:2 FTOH-C13



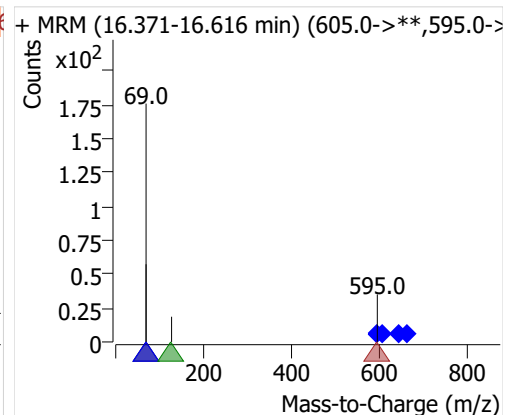
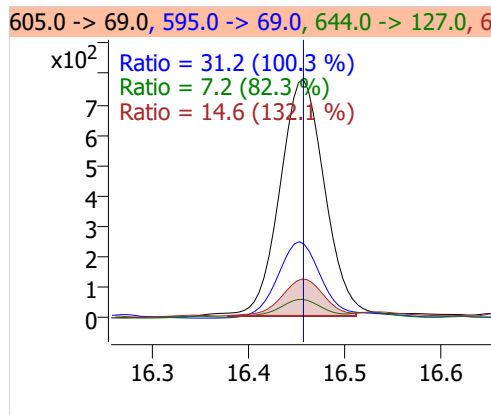
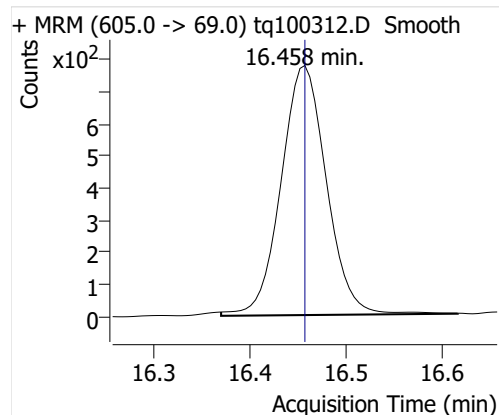
## 8:2 FTOH



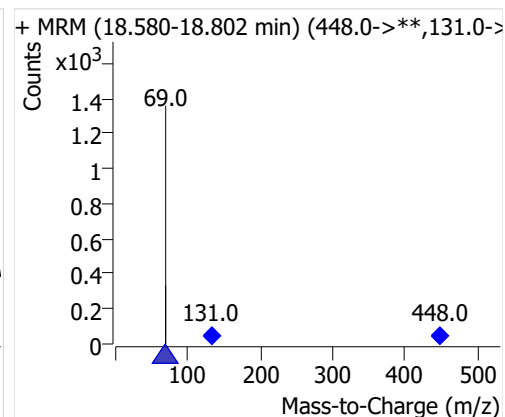
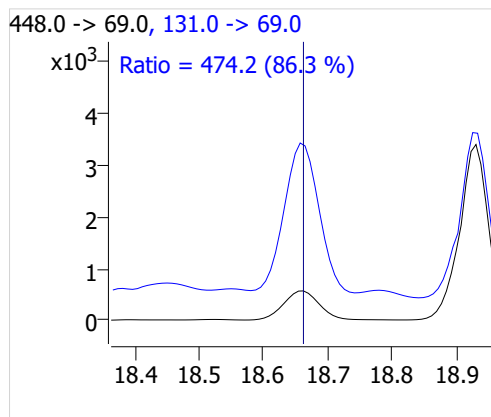
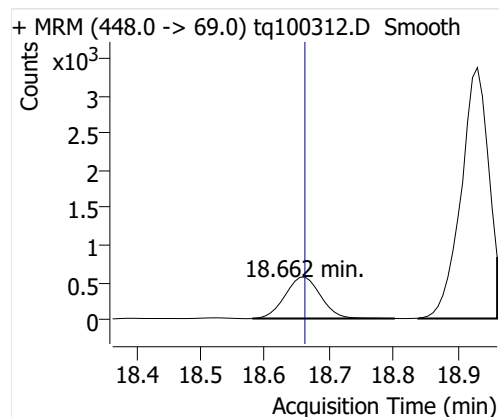
## 10:2 FTOH



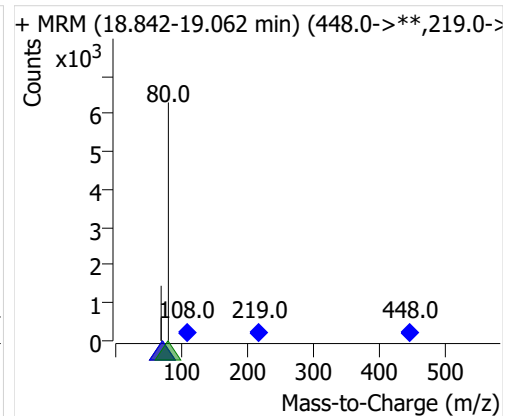
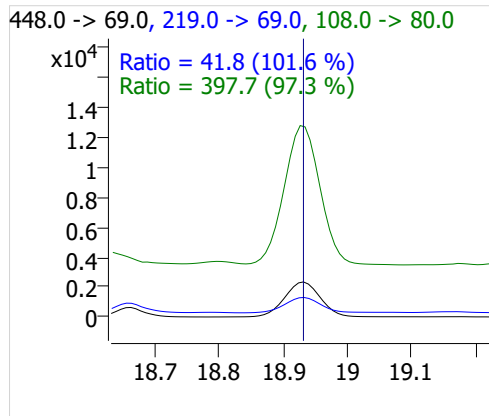
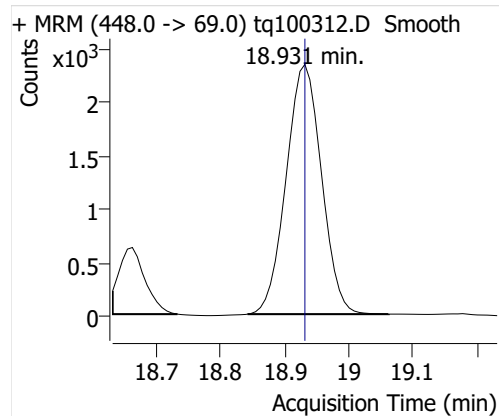
## 12:2 FTOH



## NMeFOSA



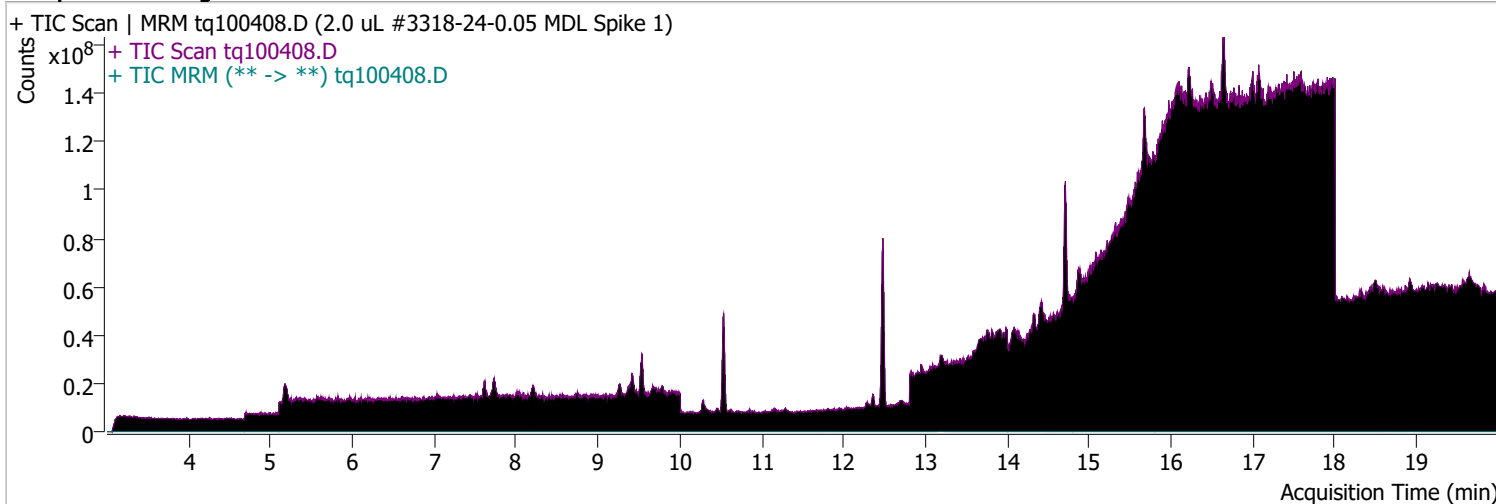
## NETFOSA



# Quantitative Analysis Sample Report

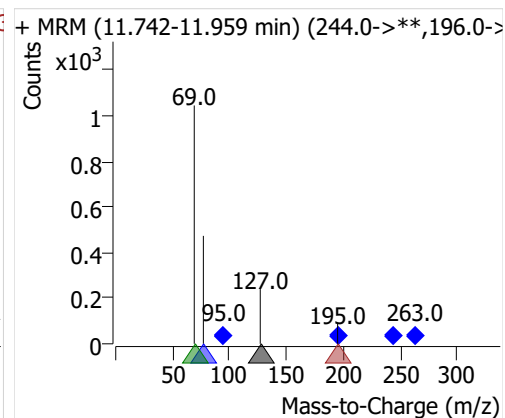
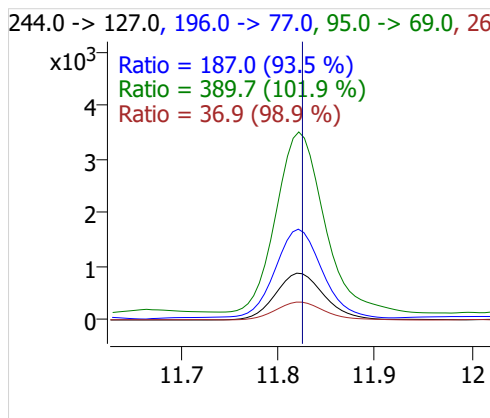
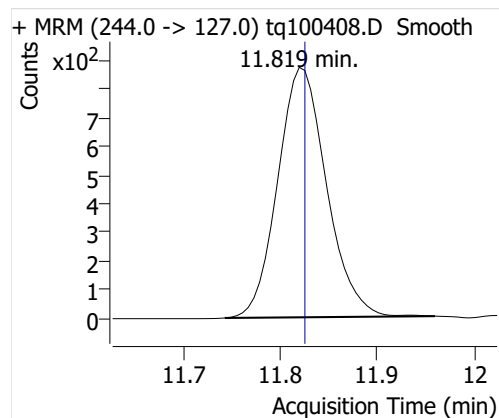
**Batch Path** D:\MassHunter\GCMS\1\data\04OCT22\QuantResults\outlier removed MDL spike.batch.bin  
**Analysis Time** 10/5/2022 8:30 AM **Analyst Name** ES-AREA1\US32\_USR\_INS22923  
**Report Time** 10/20/2022 2:57:11 PM **Reporter Name** ES-AREA1\US32\_USR\_INS22923  
**Last Calib Update** 10/3/2022 8:55 AM **Batch State** Processed  
**Quant Batch Version** 10.1 **Quant Report Version** 10.1  
**Acq. Time** 10/4/2022 12:43 PM **Data File** tq100408.D  
**Sample Type** QC **Sample Name** 2.0 uL #3318-24-0.05 MDL Spike 1  
**Dilution** 1 **Acq. Method** tq22m0930marks

## Sample Chromatogram

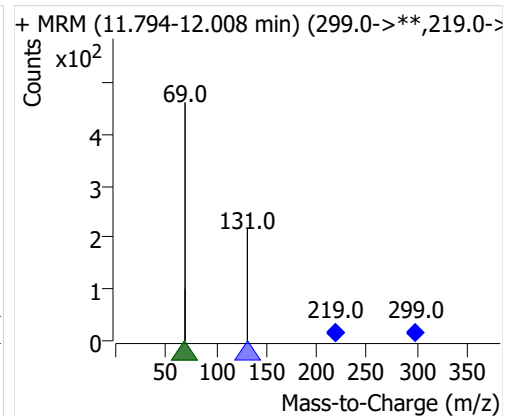
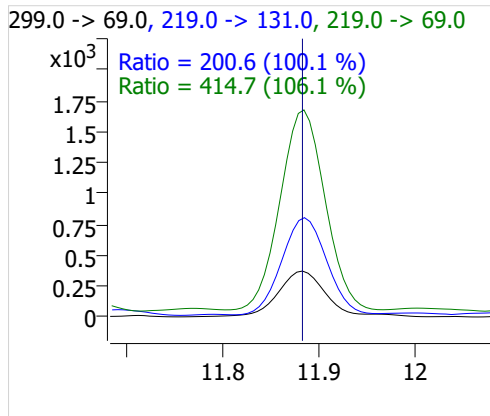
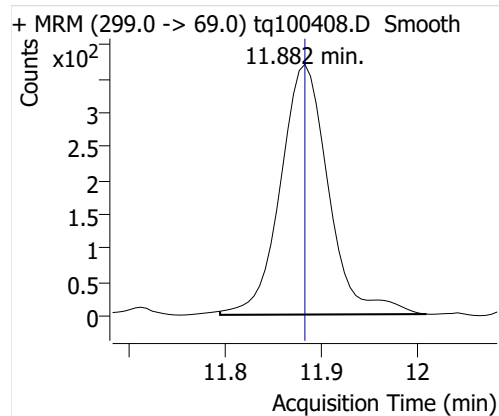


Compound	ISTD	RT	Resp.	ISTD Resp.	Resp. Ratio	Final Conc	Units
4:2 FTOH	6:2 FTOH-C13	11.819	3054	61474	0.0497	0.0904	ng
5:2sFTOH	6:2 FTOH-C13	11.882	1280	61474	0.0208	0.0880	ng
7:2sFTOH	6:2 FTOH-C13	13.183	2553	61474	0.0415	0.0873	ng
6:2 FTOH	6:2 FTOH-C13	13.209	5661	61474	0.0921	0.0912	ng
8:2 FTOH-C13	6:2 FTOH-C13	14.412	20976	61474	0.3412	0.9779	ng
8:2 FTOH	6:2 FTOH-C13	14.413	1691	61474	0.0275	0.0990	ng
10:2 FTOH	6:2 FTOH-C13	15.477	548	61474	0.0089	0.0852	ng
12:2 FTOH	6:2 FTOH-C13	16.458	1967	61474	0.0320	0.0843	ng
NMeFOSA	6:2 FTOH-C13	18.662	1657	61474	0.0270	0.0961	ng
NetFOSA	6:2 FTOH-C13	18.924	7384	61474	0.1201	0.0978	ng

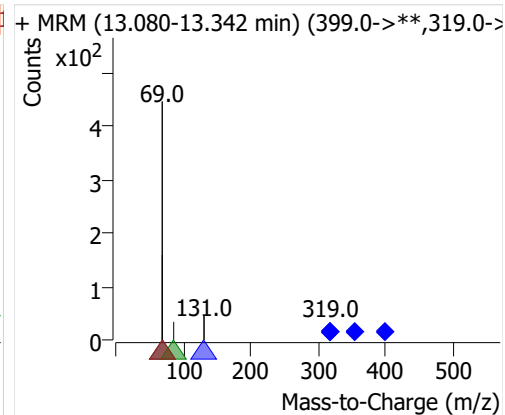
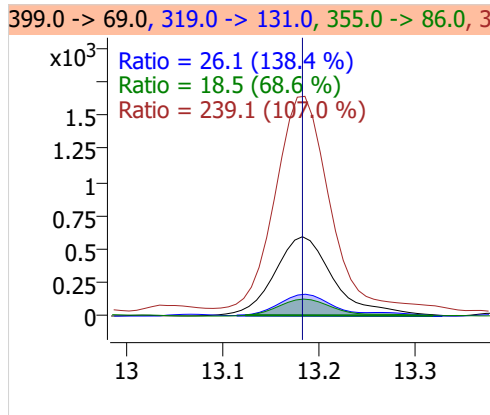
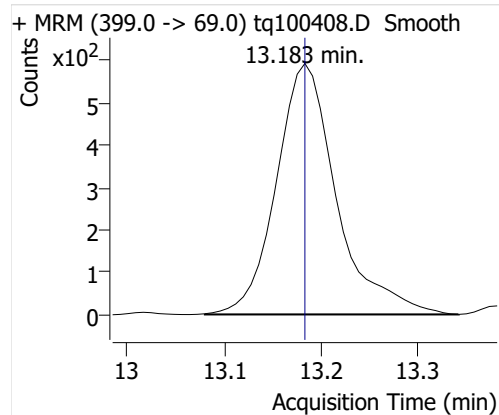
## 4:2 FTOH



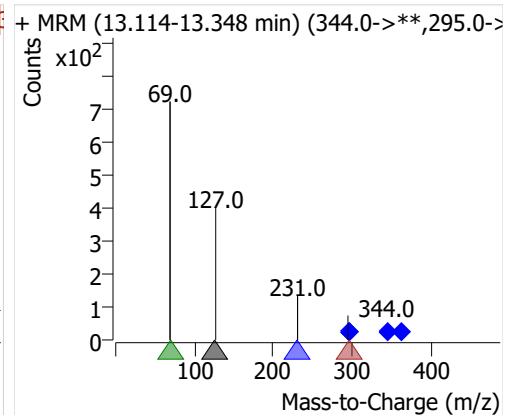
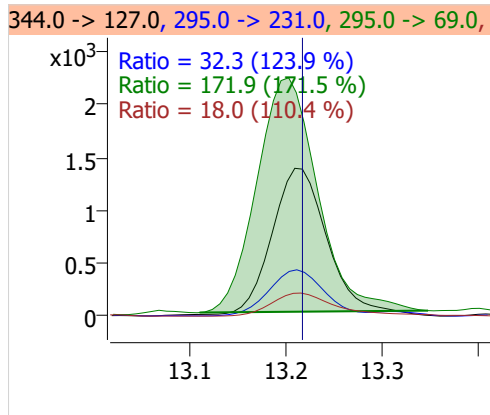
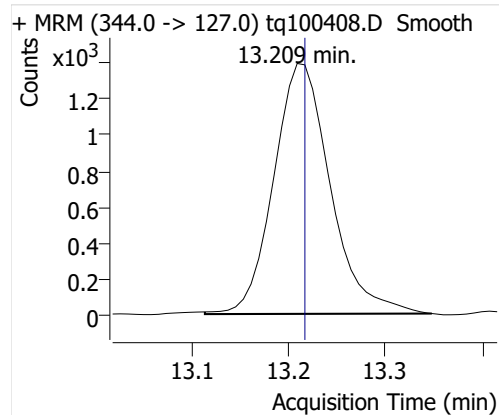
## 5:2sFTOH



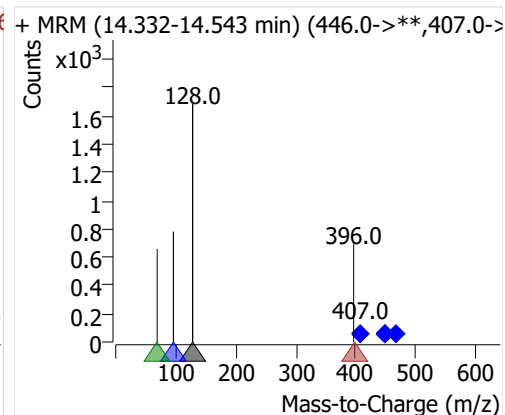
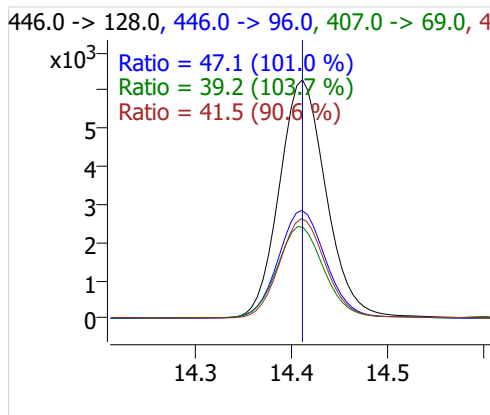
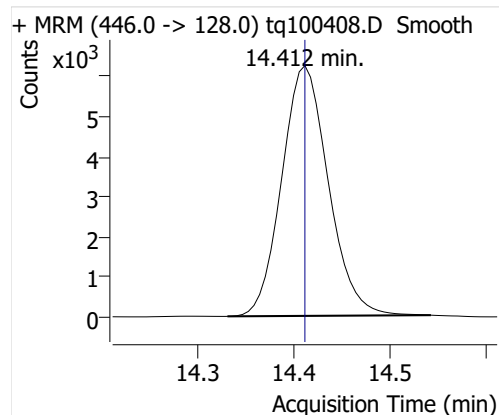
## 7:2sFTOH



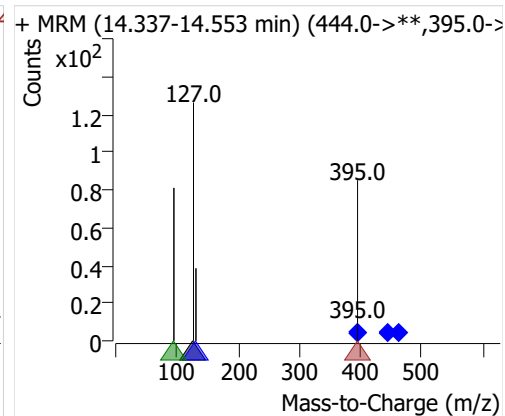
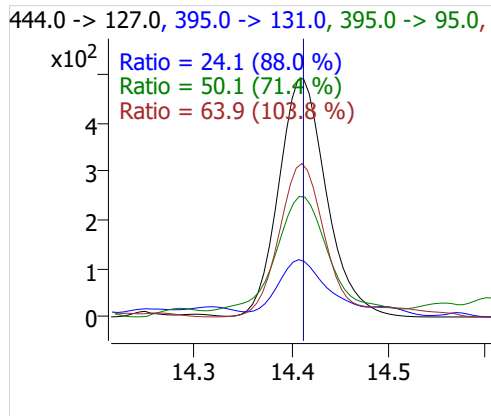
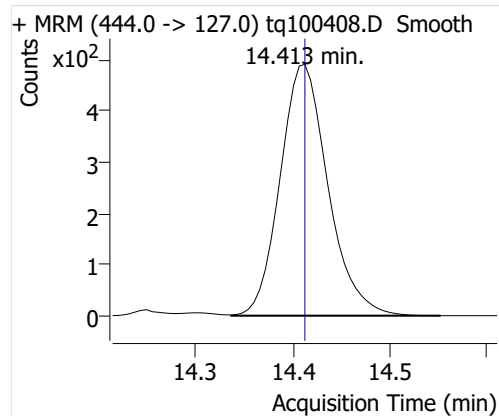
## 6:2 FTOH



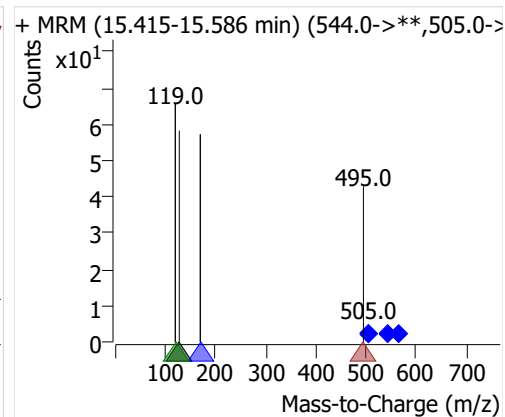
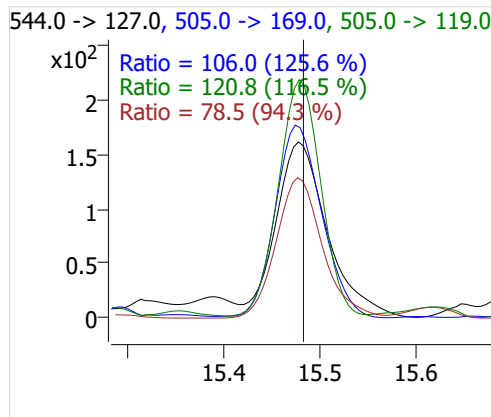
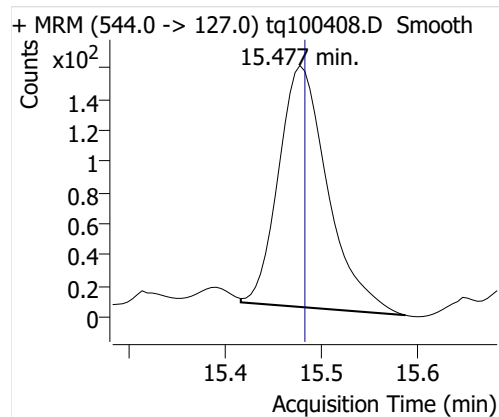
## 8:2 FTOH-C13



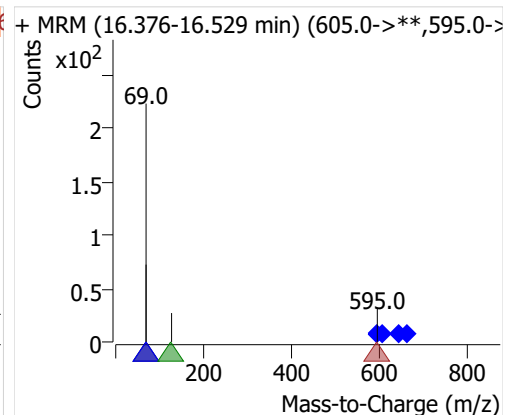
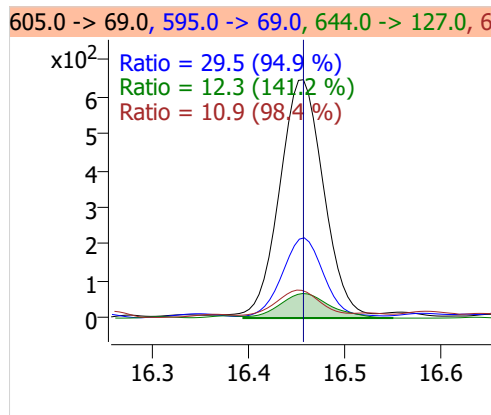
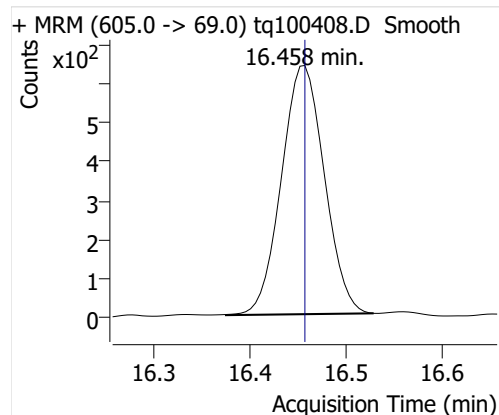
## 8:2 FTOH



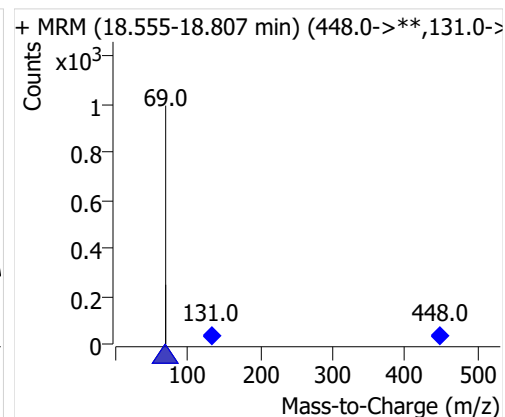
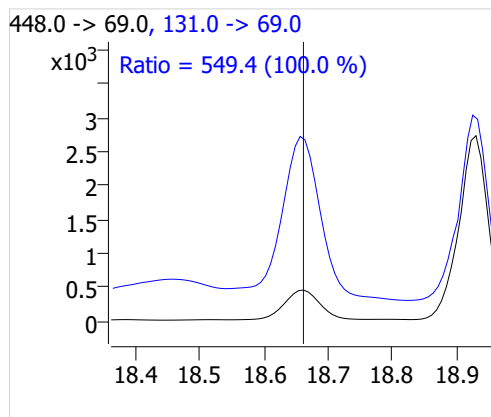
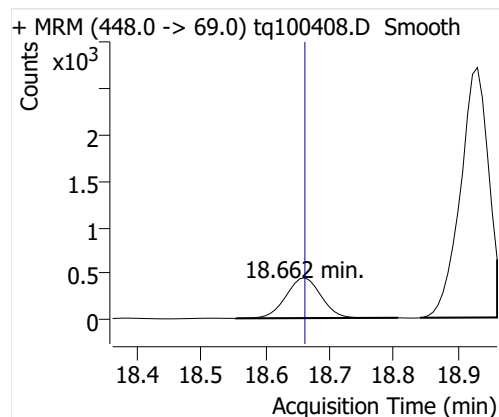
## 10:2 FTOH



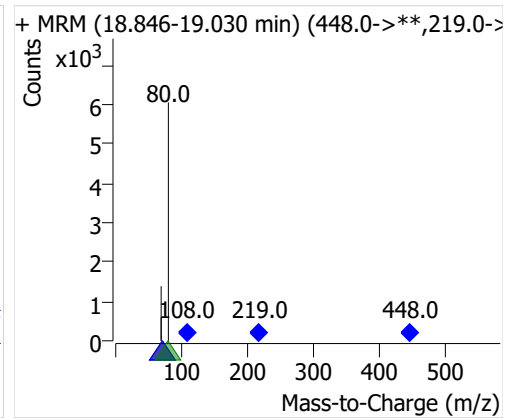
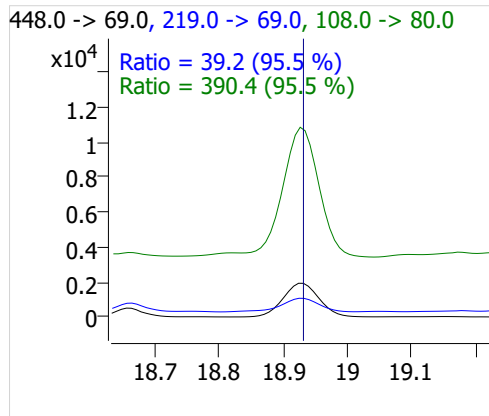
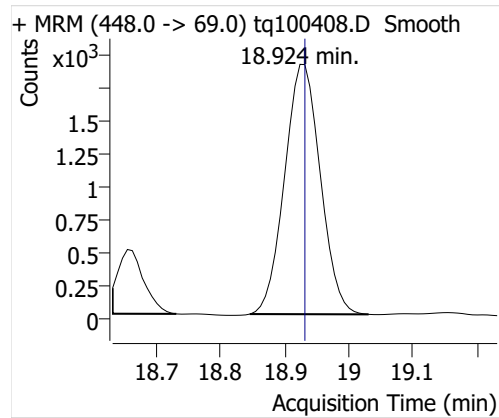
## 12:2 FTOH



## NMeFOSA



## NETFOSA

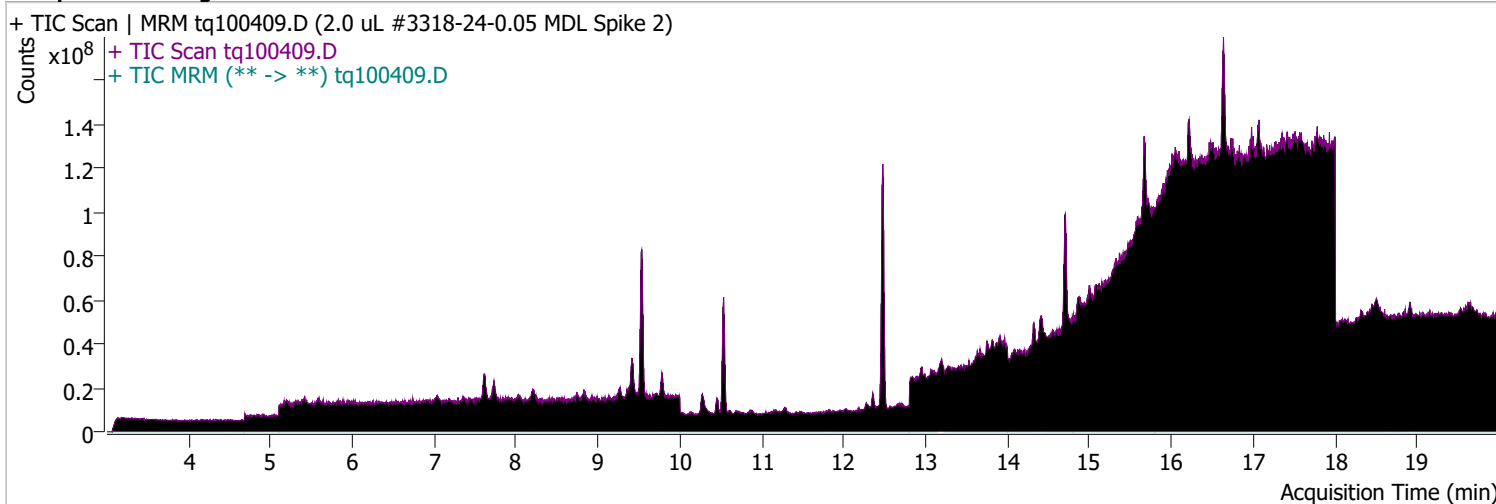




# Quantitative Analysis Sample Report

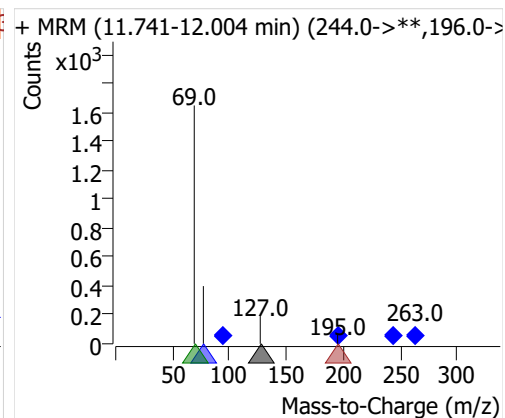
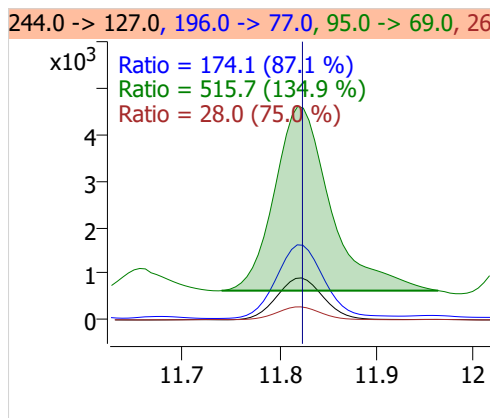
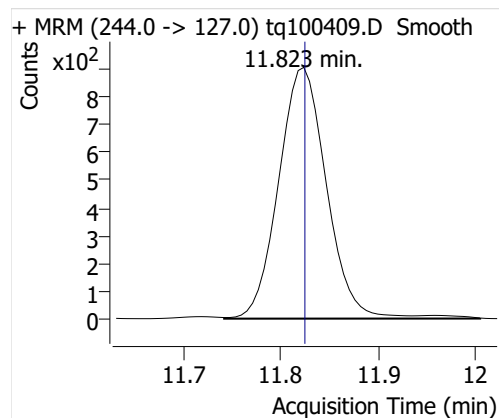
**Batch Path** D:\MassHunter\GCMS\1\data\04OCT22\QuantResults\outlier removed MDL spike.batch.bin  
**Analysis Time** 10/5/2022 8:30 AM **Analyst Name** ES-AREA1\US32\_USR\_INS22923  
**Report Time** 10/20/2022 2:57:12 PM **Reporter Name** ES-AREA1\US32\_USR\_INS22923  
**Last Calib Update** 10/3/2022 8:55 AM **Batch State** Processed  
**Quant Batch Version** 10.1 **Quant Report Version** 10.1  
**Acq. Time** 10/4/2022 1:07 PM **Data File** tq100409.D  
**Sample Type** QC **Sample Name** 2.0 uL #3318-24-0.05 MDL Spike 2  
**Dilution** 1 **Acq. Method** tq22m0930marks

## Sample Chromatogram

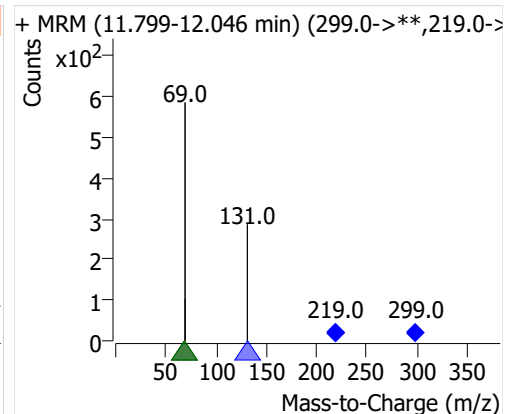
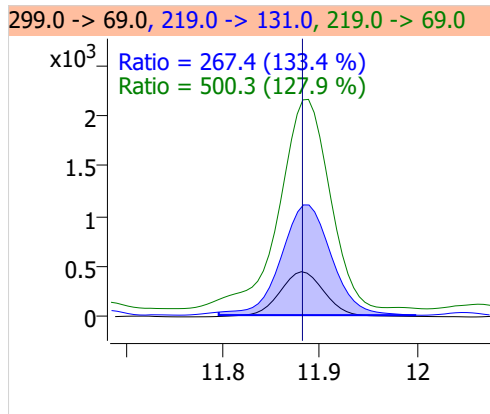
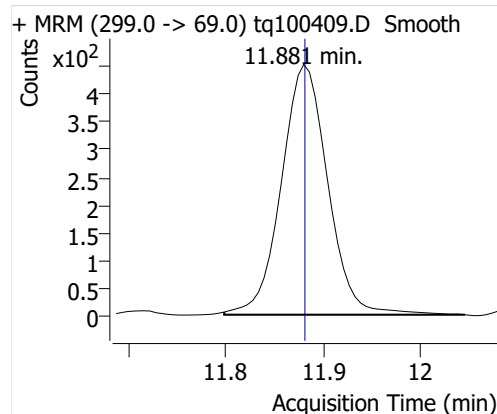


Compound	ISTD	RT	Resp.	ISTD Resp.	Resp. Ratio	Final Conc	Units
4:2 FTOH	6:2 FTOH-C13	11.823	3124	61081	0.0511	0.0930	ng
5:2sFTOH	6:2 FTOH-C13	11.881	1492	61081	0.0244	0.1032	ng
7:2sFTOH	6:2 FTOH-C13	13.182	2841	61081	0.0465	0.0977	ng
6:2 FTOH	6:2 FTOH-C13	13.208	6527	61081	0.1069	0.1058	ng
8:2 FTOH-C13	6:2 FTOH-C13	14.413	20735	61081	0.3395	0.9729	ng
8:2 FTOH	6:2 FTOH-C13	14.413	1400	61081	0.0229	0.0825	ng
10:2 FTOH	6:2 FTOH-C13	15.472	644	61081	0.0105	0.1009	ng
12:2 FTOH	6:2 FTOH-C13	16.457	2179	61081	0.0357	0.0940	ng
NMeFOSA	6:2 FTOH-C13	18.654	1531	61081	0.0251	0.0894	ng
NEtFOSA	6:2 FTOH-C13	18.931	6988	61081	0.1144	0.0932	ng

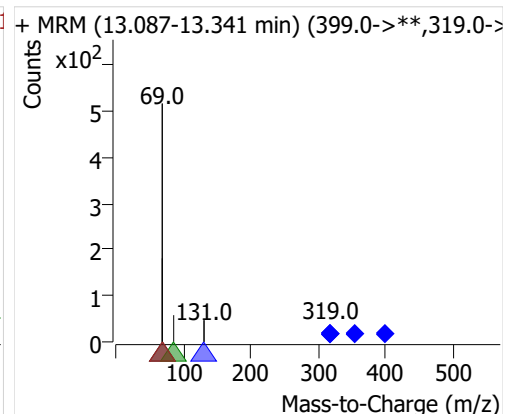
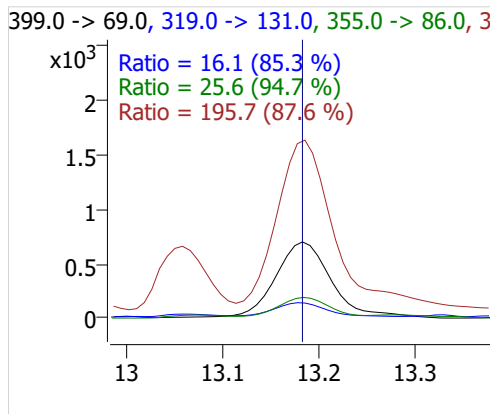
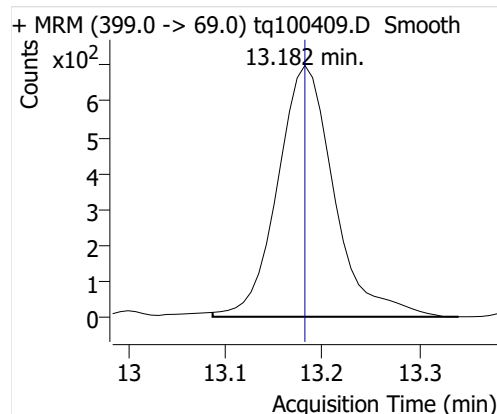
## 4:2 FTOH



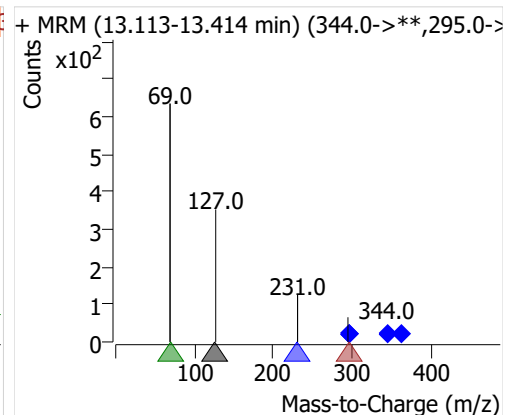
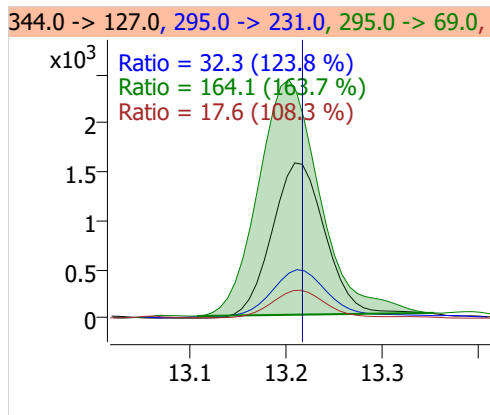
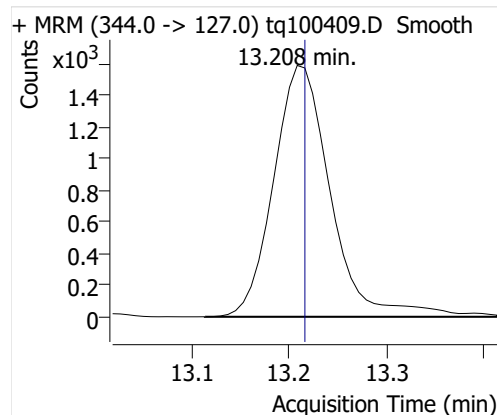
## 5:2sFTOH



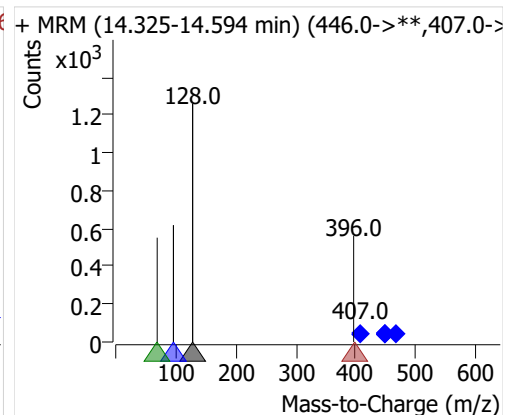
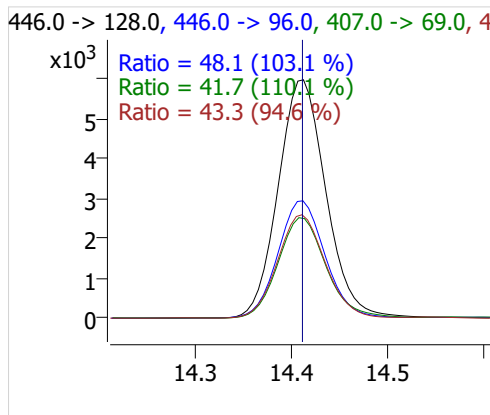
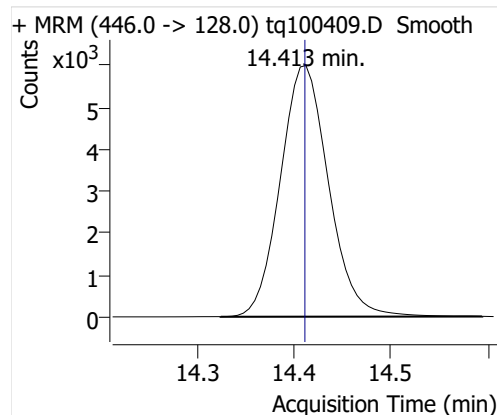
## 7:2sFTOH



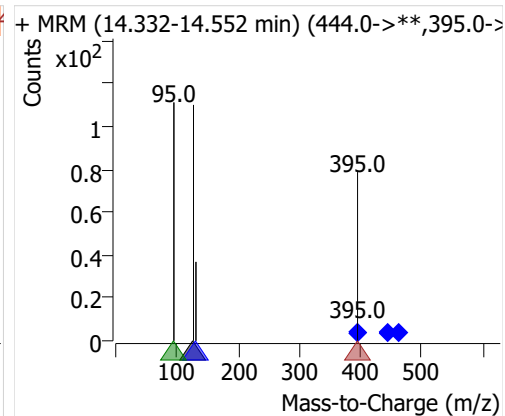
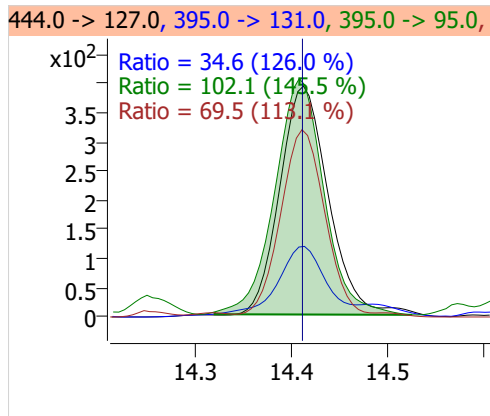
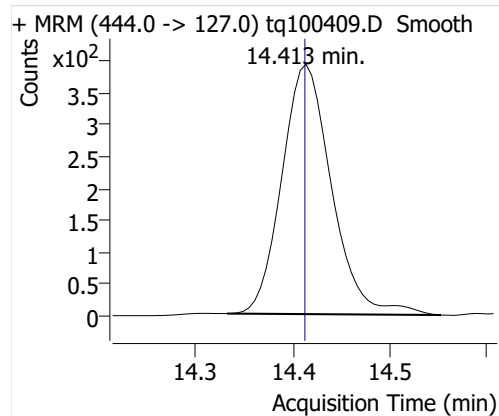
## 6:2 FTOH



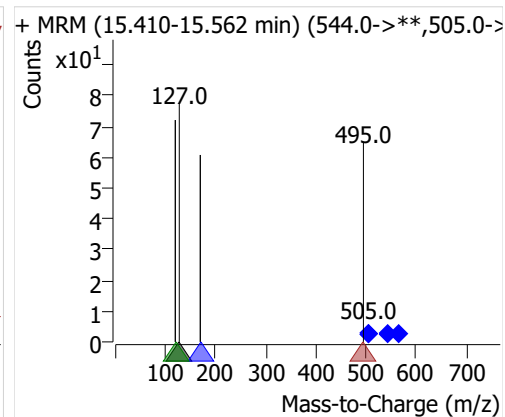
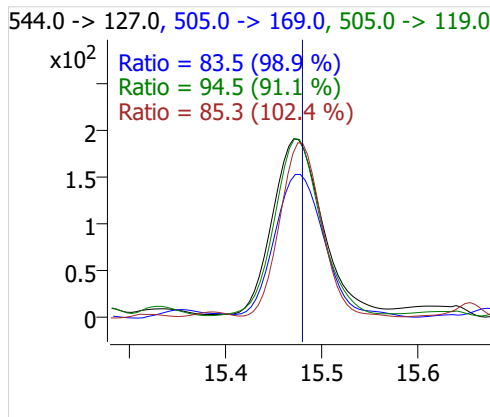
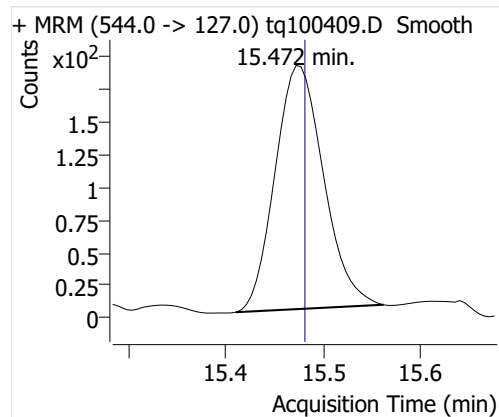
## 8:2 FTOH-C13



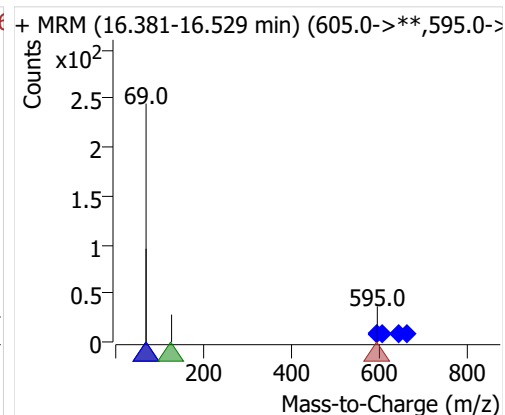
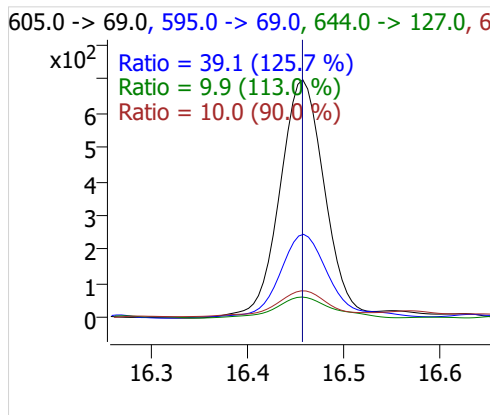
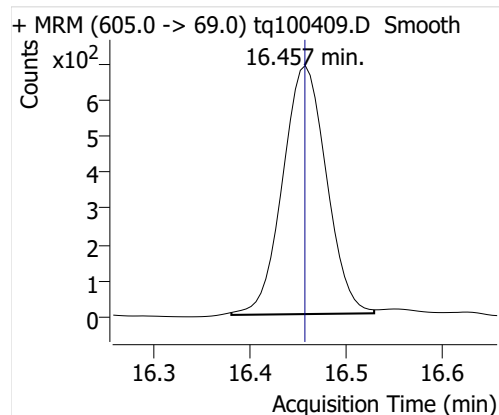
## 8:2 FTOH



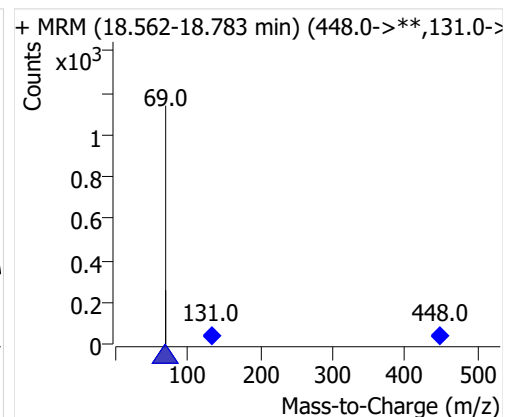
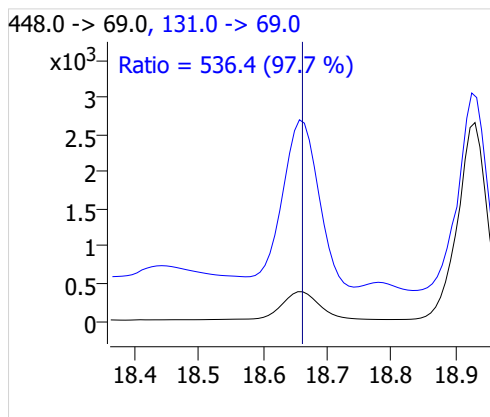
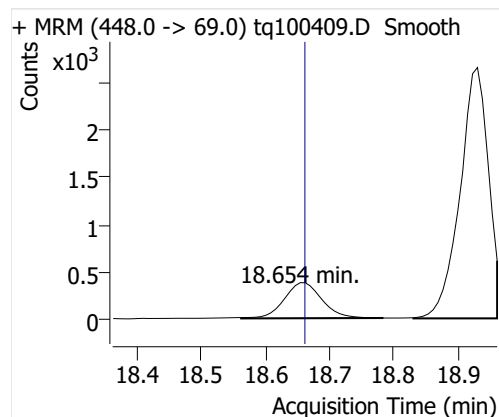
## 10:2 FTOH



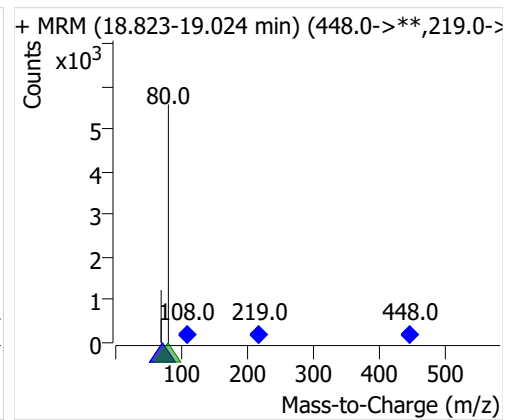
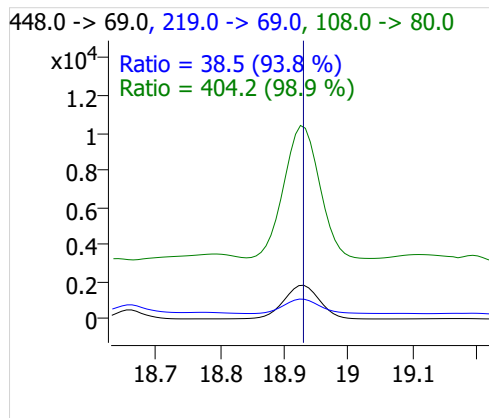
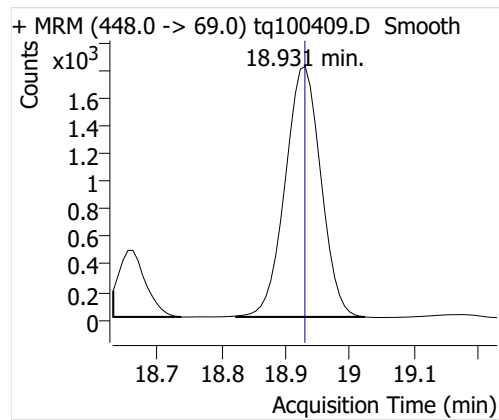
## 12:2 FTOH



## NMeFOSA



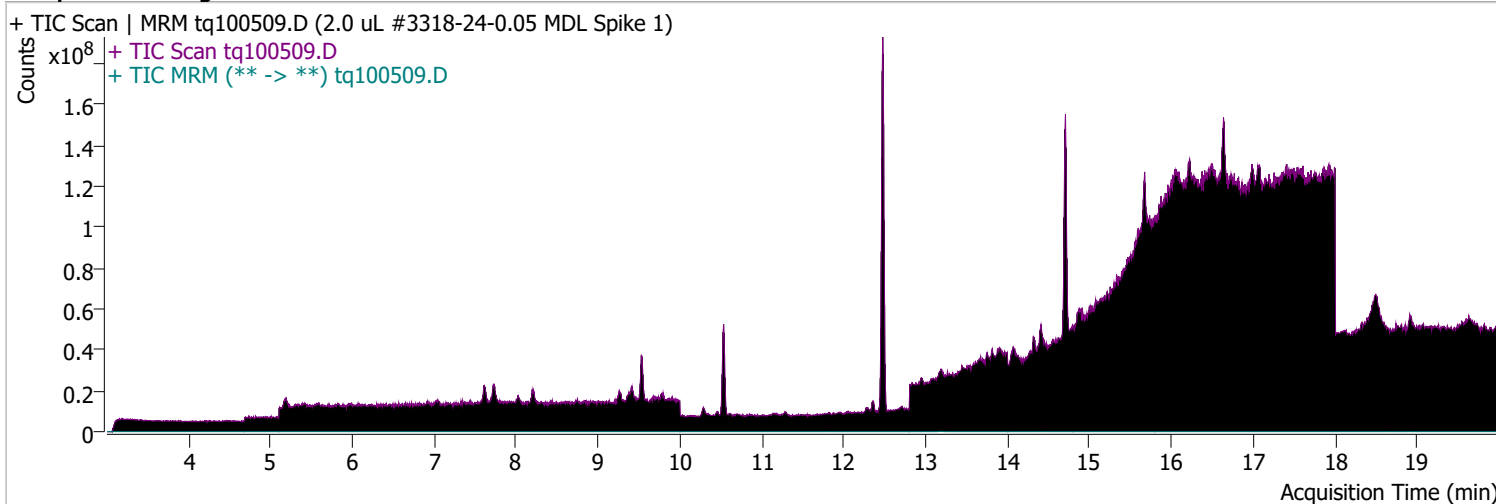
## NETFOSA



# Quantitative Analysis Sample Report

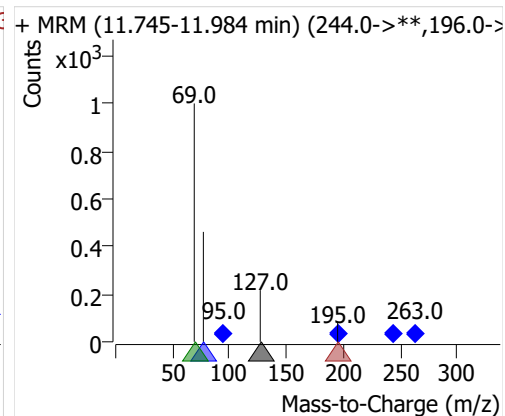
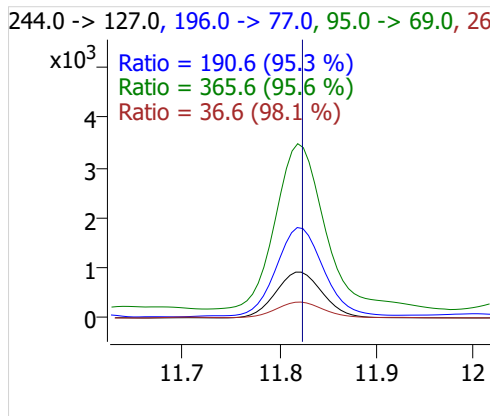
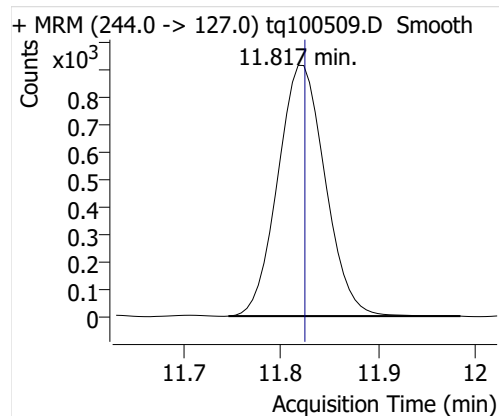
**Batch Path** D:\MassHunter\GCMS\1\data\04OCT22\QuantResults\outlier removed MDL spike.batch.bin  
**Analysis Time** 10/5/2022 8:30 AM **Analyst Name** ES-AREA1\US32\_USR\_INS22923  
**Report Time** 10/20/2022 2:57:13 PM **Reporter Name** ES-AREA1\US32\_USR\_INS22923  
**Last Calib Update** 10/3/2022 8:55 AM **Batch State** Processed  
**Quant Batch Version** 10.1 **Quant Report Version** 10.1  
**Acq. Time** 10/5/2022 1:12 PM **Data File** tq100509.D  
**Sample Type** QC **Sample Name** 2.0 uL #3318-24-0.05 MDL Spike 1  
**Dilution** 1 **Acq. Method** tq22m0930marks

## Sample Chromatogram

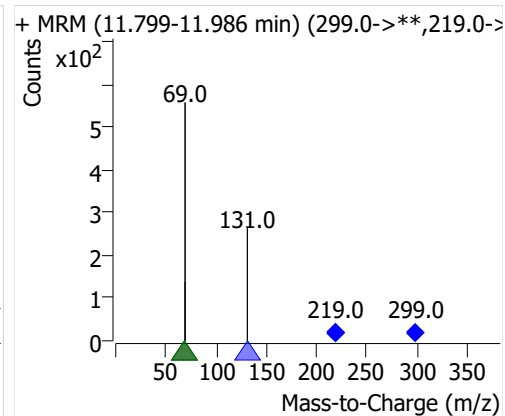
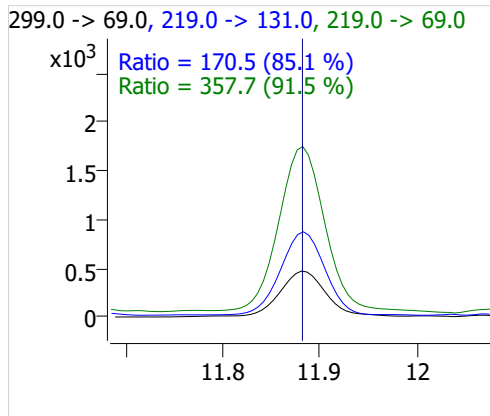
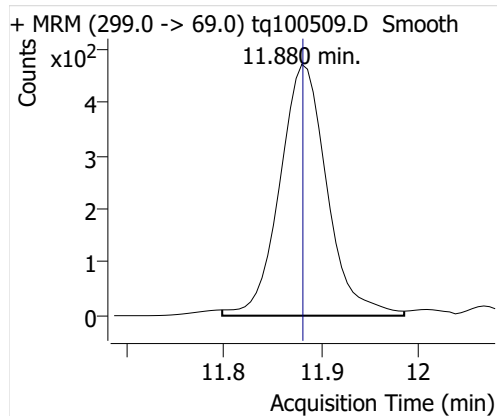


Compound	ISTD	RT	Resp.	ISTD Resp.	Resp. Ratio	Final Conc	Units
4:2 FTOH	6:2 FTOH-C13	11.817	3096	59694	0.0519	0.0944	ng
5:2sFTOH	6:2 FTOH-C13	11.880	1595	59694	0.0267	0.1129	ng
7:2sFTOH	6:2 FTOH-C13	13.182	2907	59694	0.0487	0.1023	ng
6:2 FTOH	6:2 FTOH-C13	13.216	7139	59694	0.1196	0.1184	ng
8:2 FTOH-C13	6:2 FTOH-C13	14.413	21927	59694	0.3673	1.0527	ng
8:2 FTOH	6:2 FTOH-C13	14.413	1903	59694	0.0319	0.1148	ng
10:2 FTOH	6:2 FTOH-C13	15.477	689	59694	0.0115	0.1105	ng
12:2 FTOH	6:2 FTOH-C13	16.457	2037	59694	0.0341	0.0899	ng
NMeFOSA	6:2 FTOH-C13	18.662	1743	59694	0.0292	0.1041	ng
NEtFOSA	6:2 FTOH-C13	18.931	8246	59694	0.1381	0.1125	ng

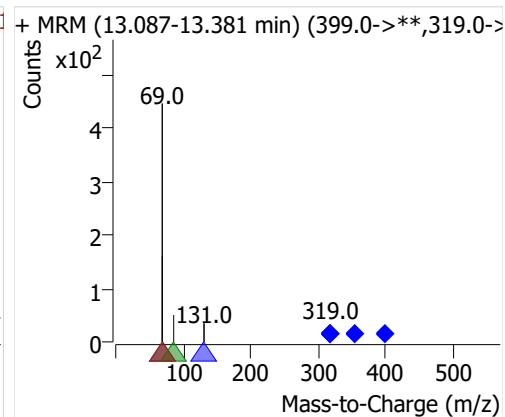
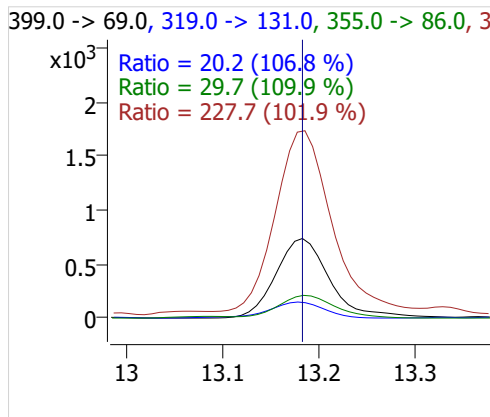
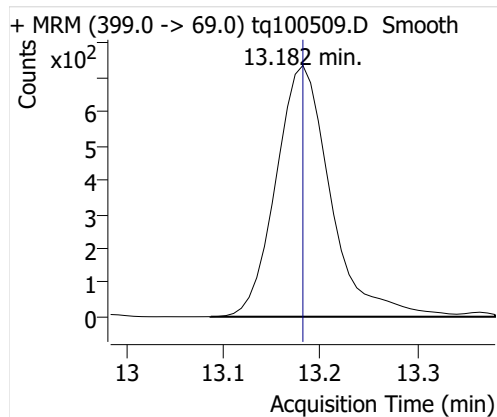
## 4:2 FTOH



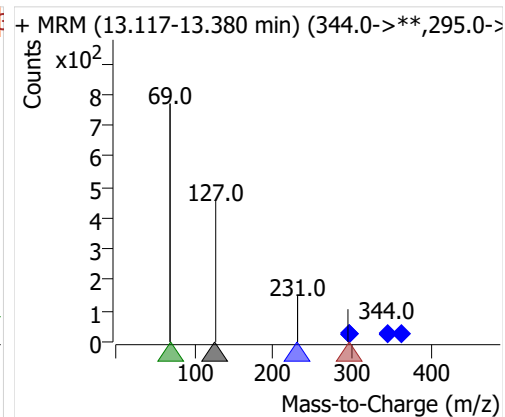
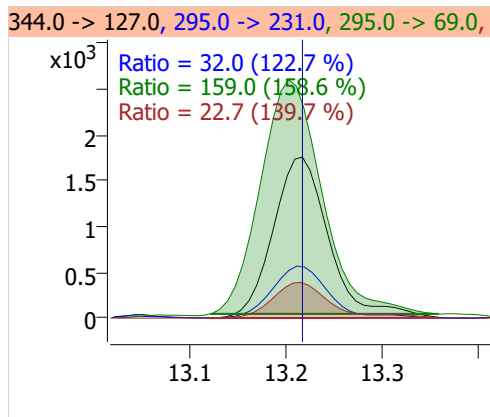
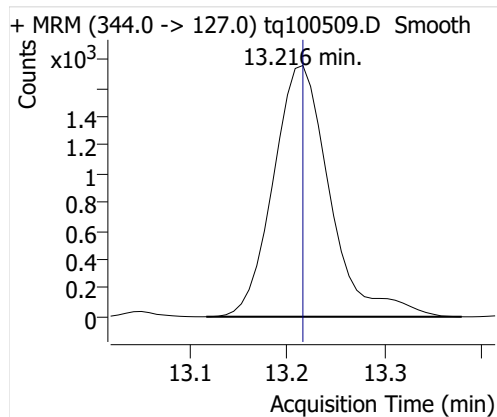
## 5:2sFTOH



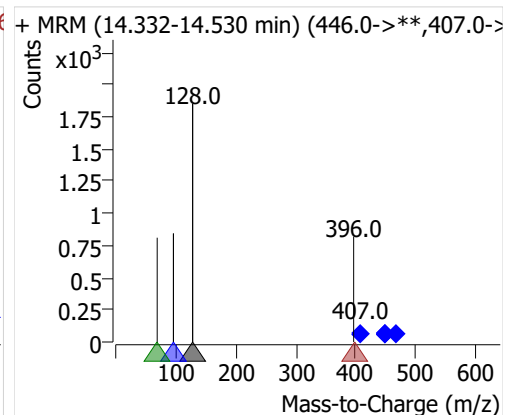
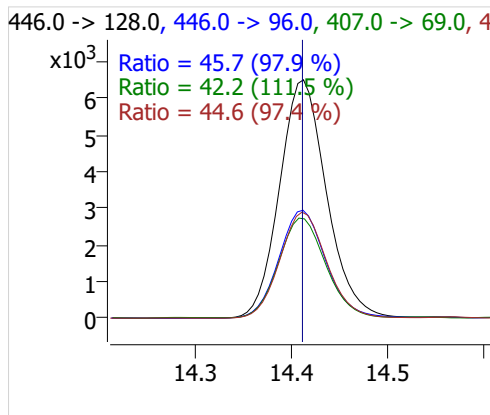
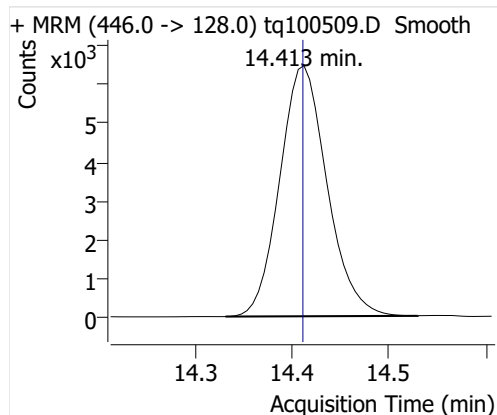
## 7:2sFTOH



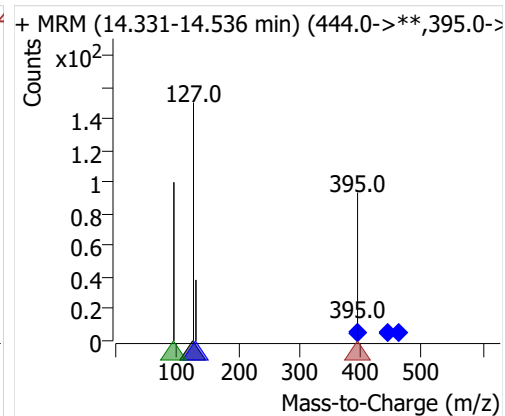
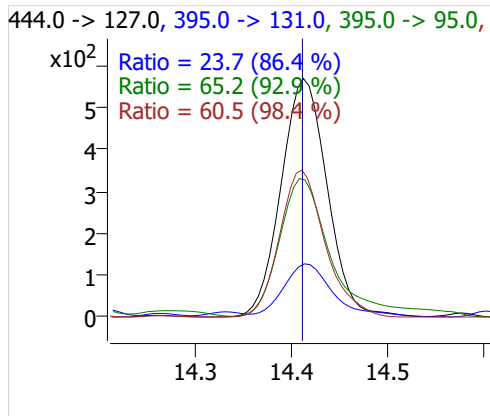
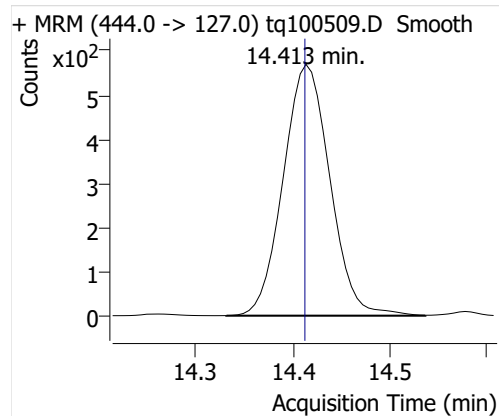
## 6:2 FTOH



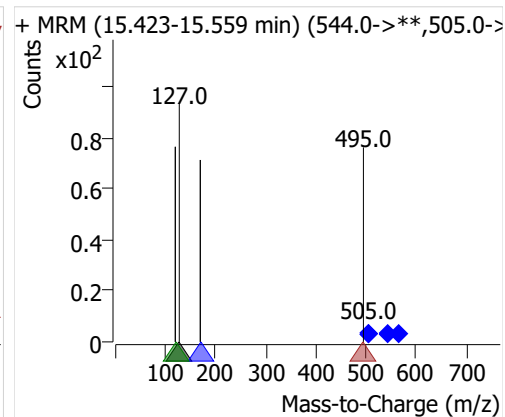
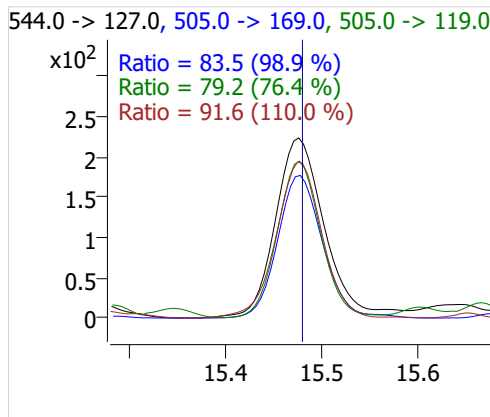
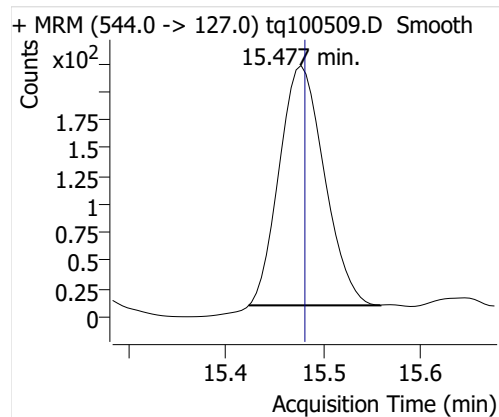
## 8:2 FTOH-C13



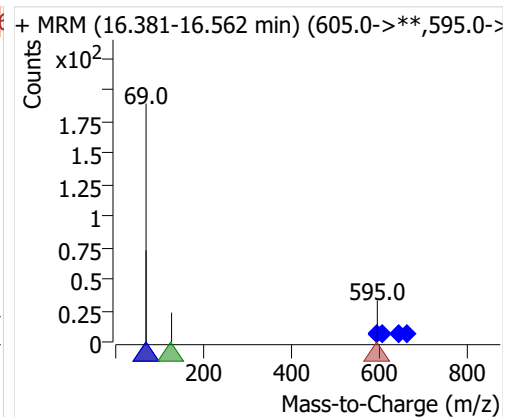
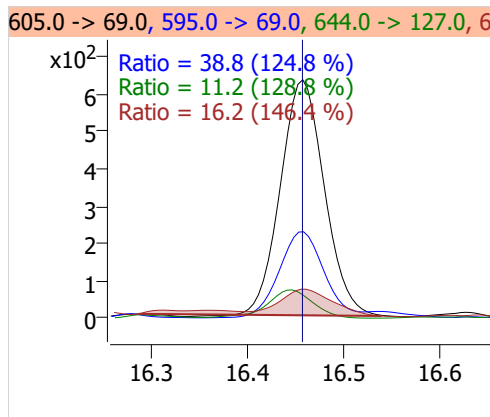
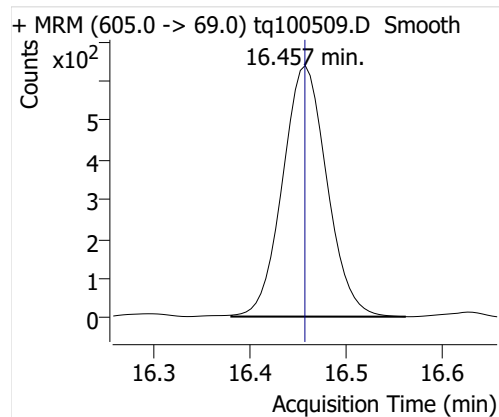
## 8:2 FTOH



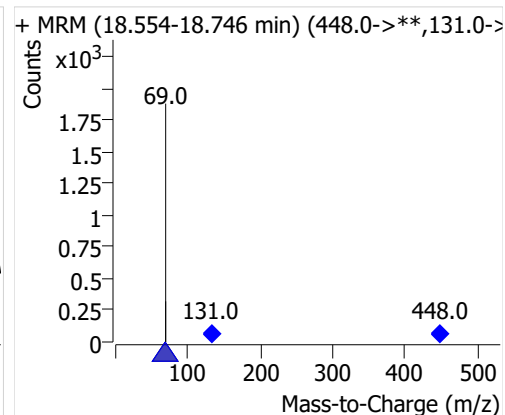
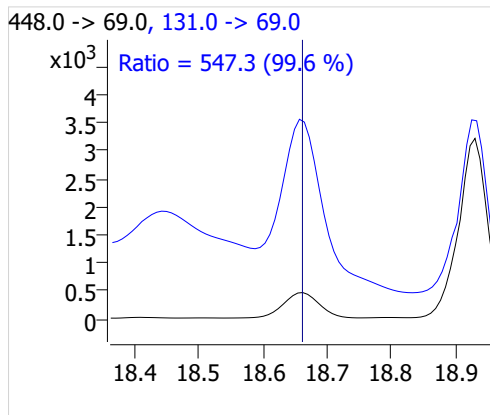
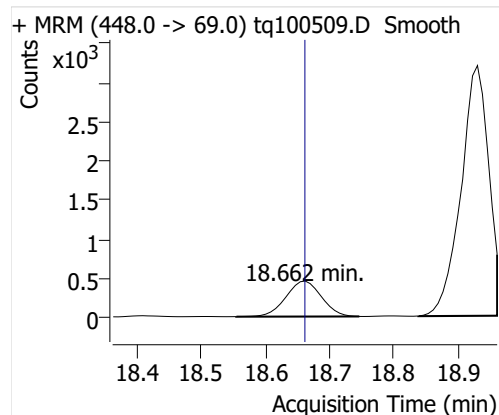
## 10:2 FTOH



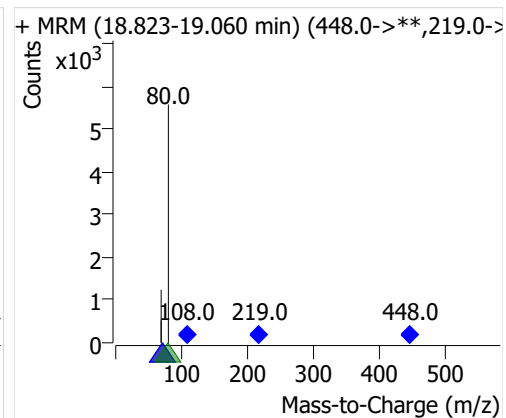
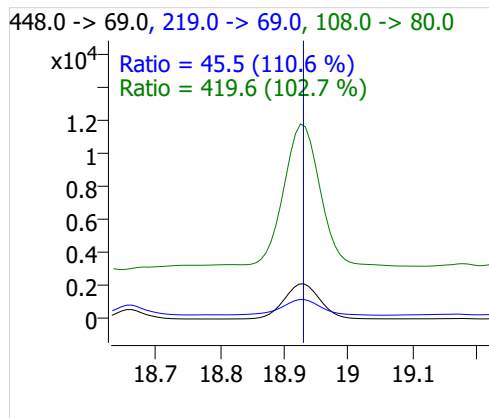
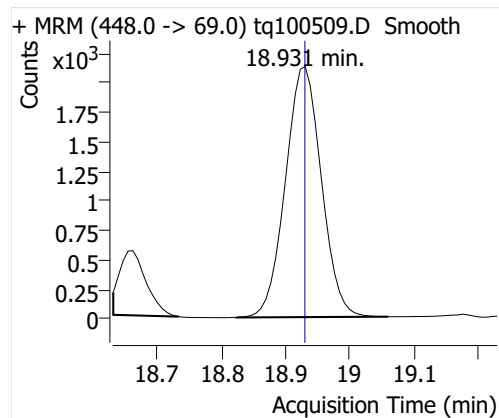
## 12:2 FTOH



## NMeFOSA



## NETFOSA

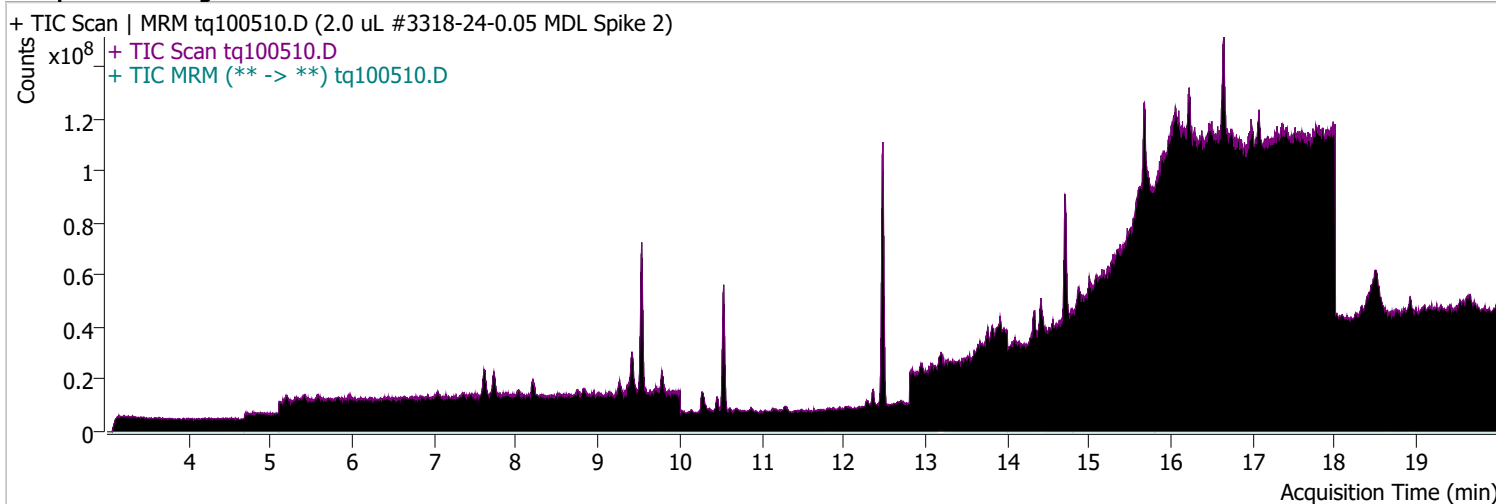




# Quantitative Analysis Sample Report

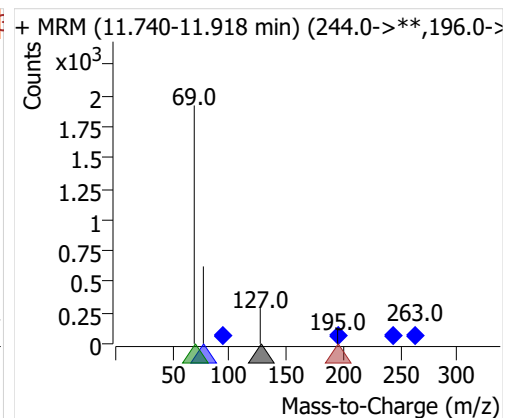
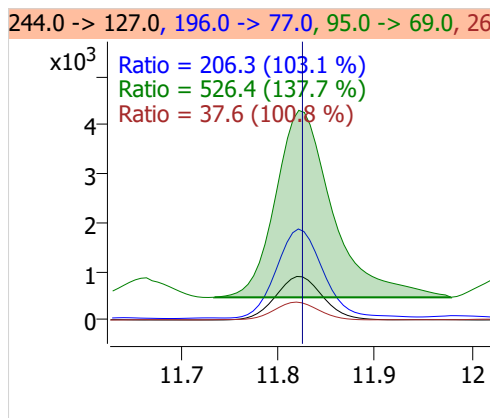
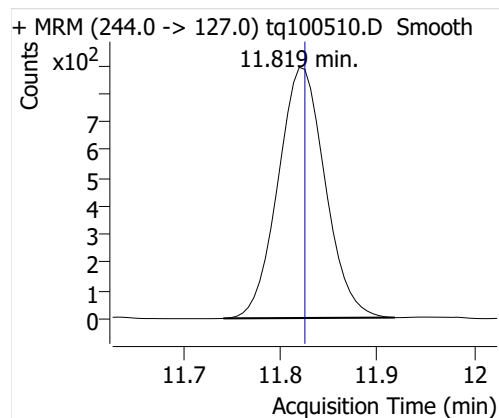
Batch Path	D:\MassHunter\GCMS\1\data\04OCT22\QuantResults\outlier removed MDL spike.batch.bin		
Analysis Time	10/5/2022 8:30 AM	Analyst Name	ES-AREA1\US32_USR_INS22923
Report Time	10/20/2022 2:57:14 PM	Reporter Name	ES-AREA1\US32_USR_INS22923
Last Calib Update	10/3/2022 8:55 AM	Batch State	Processed
Quant Batch Version	10.1	Quant Report Version	10.1
Acq. Time	10/5/2022 1:35 PM	Data File	tq100510.D
Sample Type	QC	Sample Name	2.0 uL #3318-24-0.05 MDL Spike 2
Dilution	1	Acq. Method	tq22m0930marks

## Sample Chromatogram

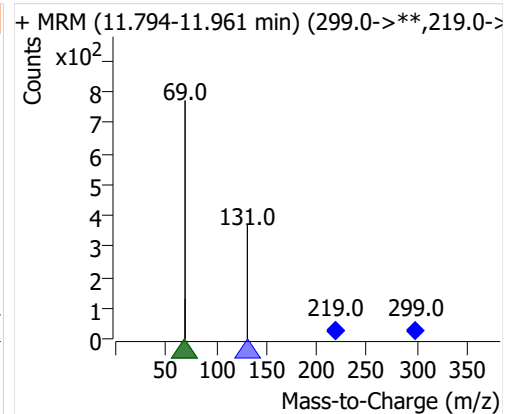
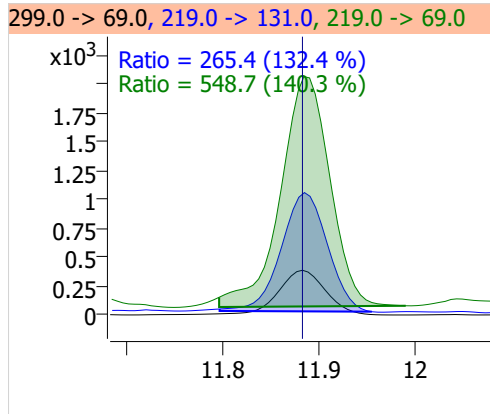
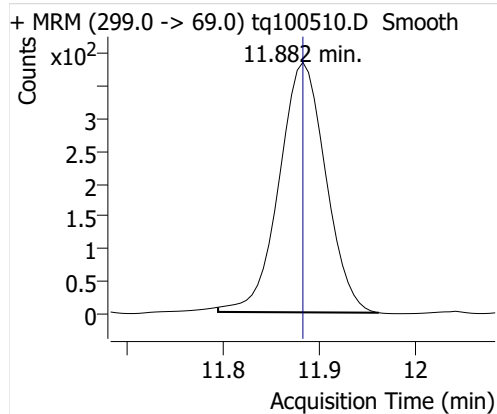


Compound	ISTD	RT	Resp.	ISTD Resp.	Resp. Ratio	Final Conc	Units
4:2 FTOH	6:2 FTOH-C13	11.819	3021	56137	0.0538	0.0979	ng
5:2sFTOH	6:2 FTOH-C13	11.882	1291	56137	0.0230	0.0972	ng
7:2sFTOH	6:2 FTOH-C13	13.183	2643	56137	0.0471	0.0989	ng
6:2 FTOH	6:2 FTOH-C13	13.217	5573	56137	0.0993	0.0983	ng
8:2 FTOH-C13	6:2 FTOH-C13	14.412	19808	56137	0.3529	1.0112	ng
8:2 FTOH	6:2 FTOH-C13	14.413	1752	56137	0.0312	0.1123	ng
10:2 FTOH	6:2 FTOH-C13	15.477	593	56137	0.0106	0.1011	ng
12:2 FTOH	6:2 FTOH-C13	16.458	2074	56137	0.0369	0.0973	ng
NMeFOSA	6:2 FTOH-C13	18.662	1674	56137	0.0298	0.1063	ng
NEtFOSA	6:2 FTOH-C13	18.931	7283	56137	0.1297	0.1057	ng

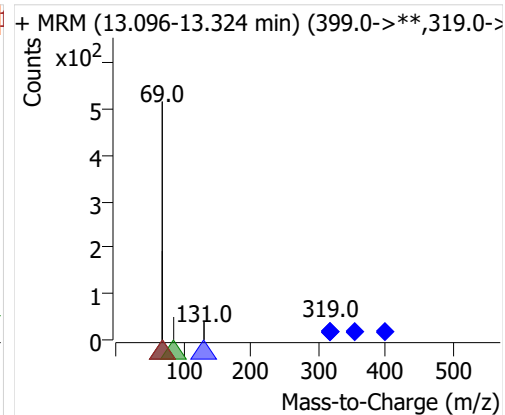
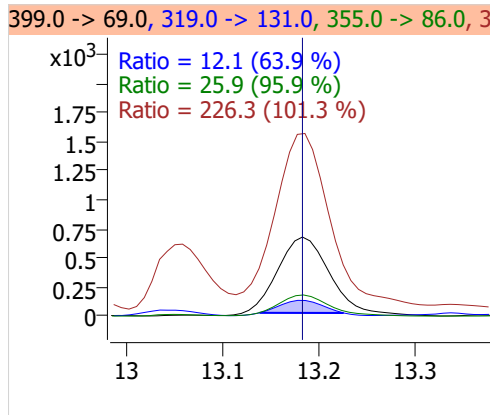
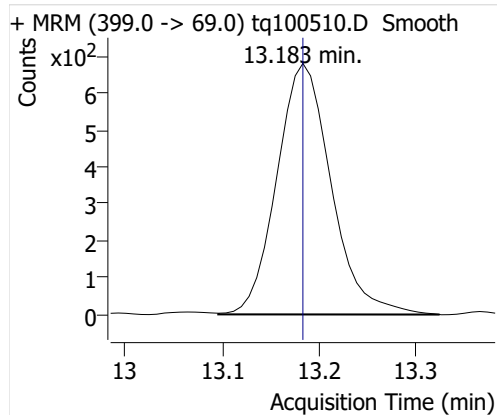
## 4:2 FTOH



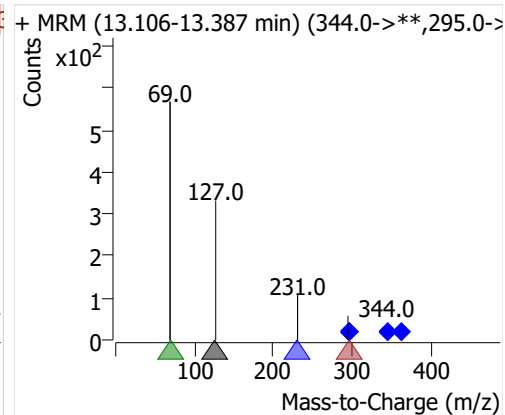
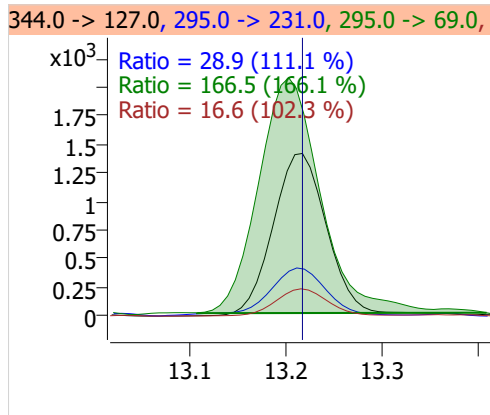
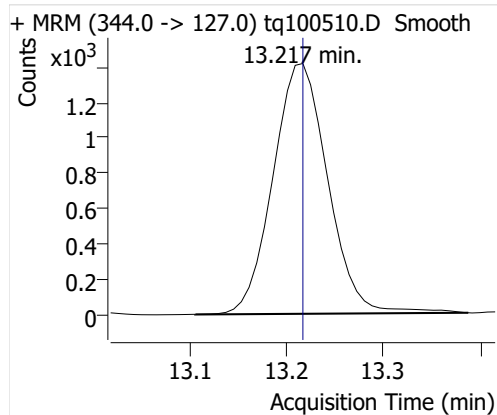
## 5:2sFTOH



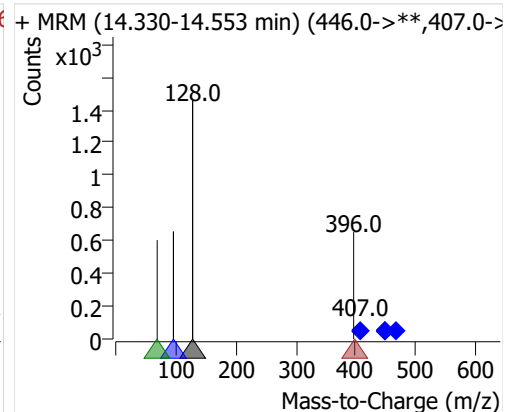
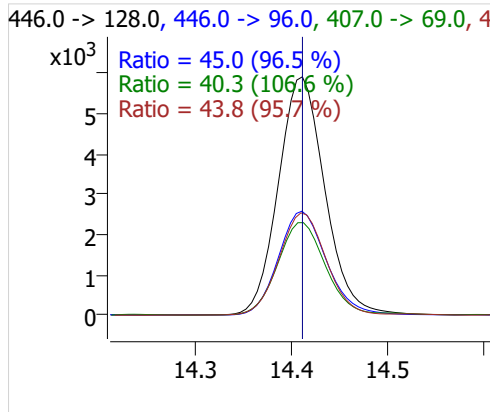
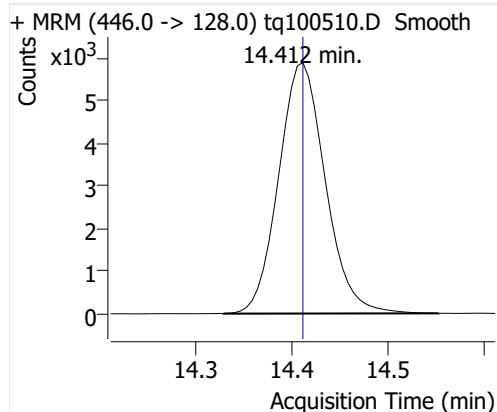
## 7:2sFTOH



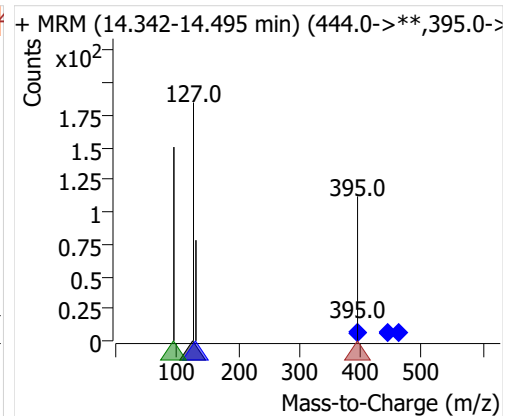
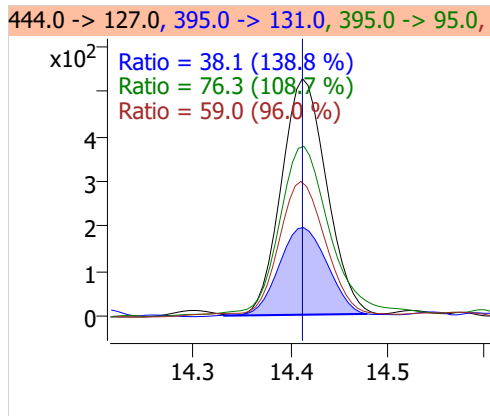
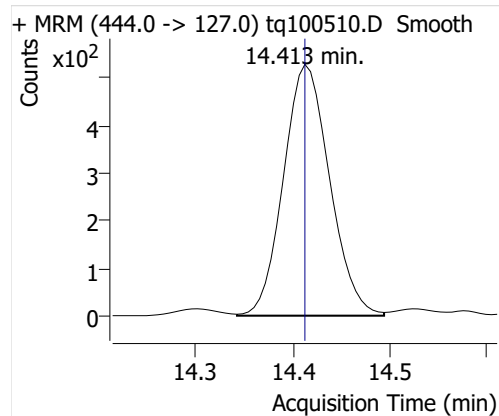
## 6:2 FTOH



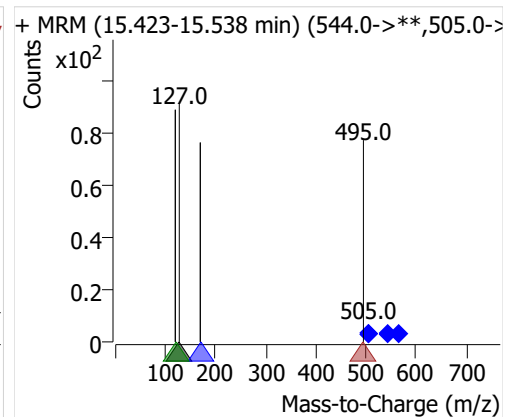
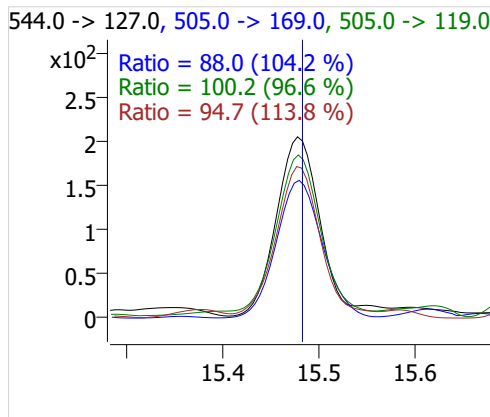
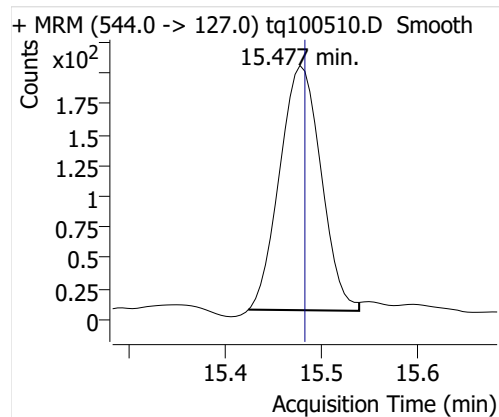
## 8:2 FTOH-C13



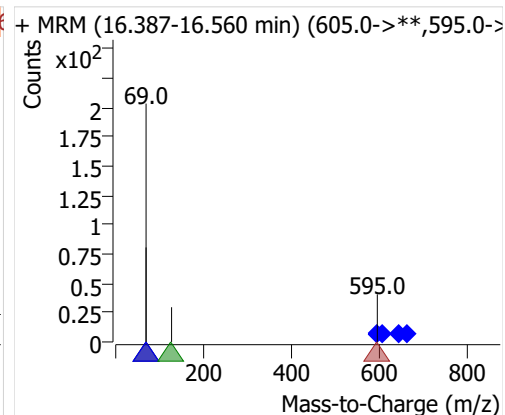
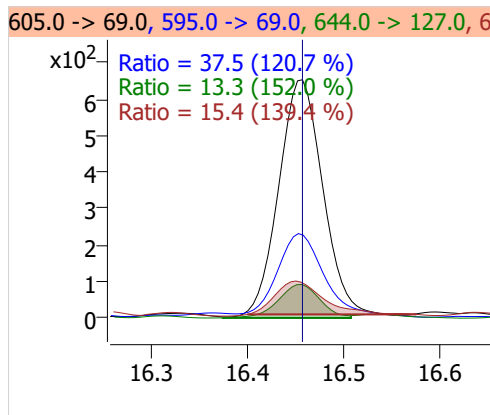
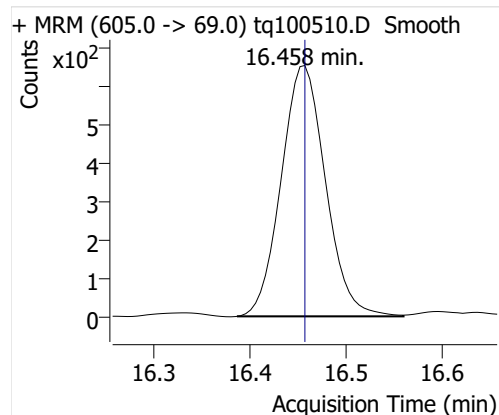
## 8:2 FTOH



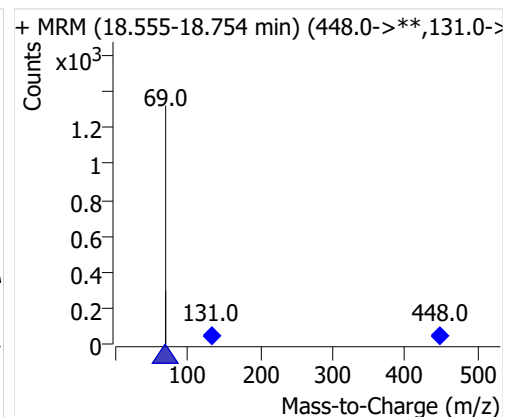
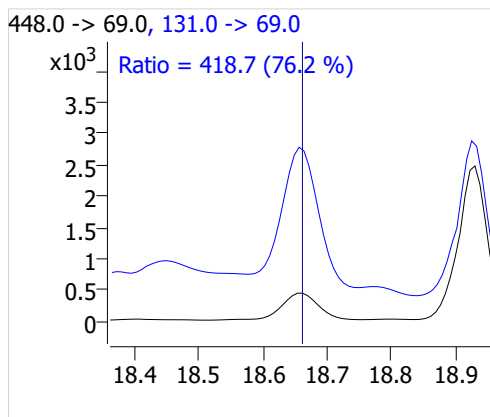
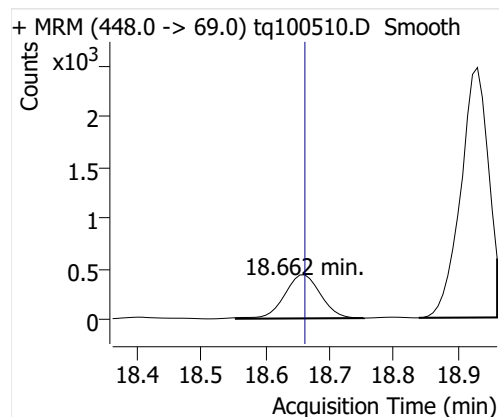
## 10:2 FTOH



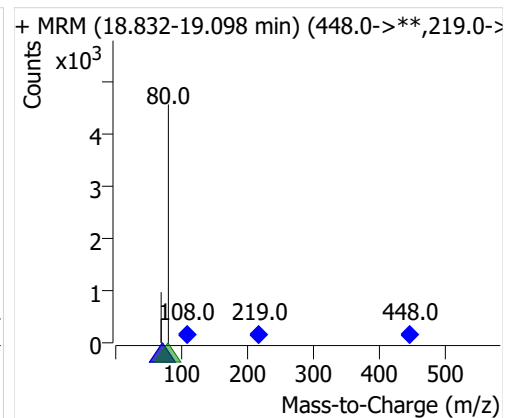
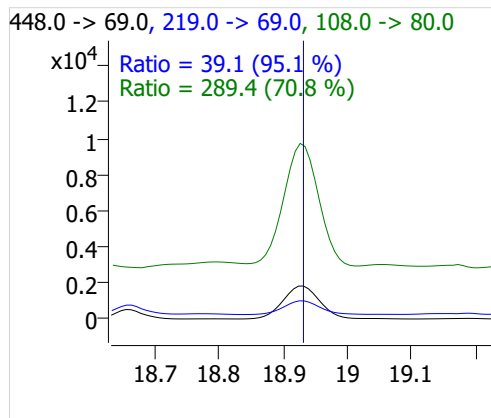
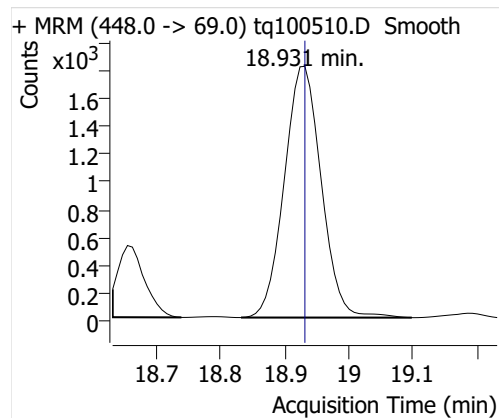
## 12:2 FTOH



## NMeFOSA



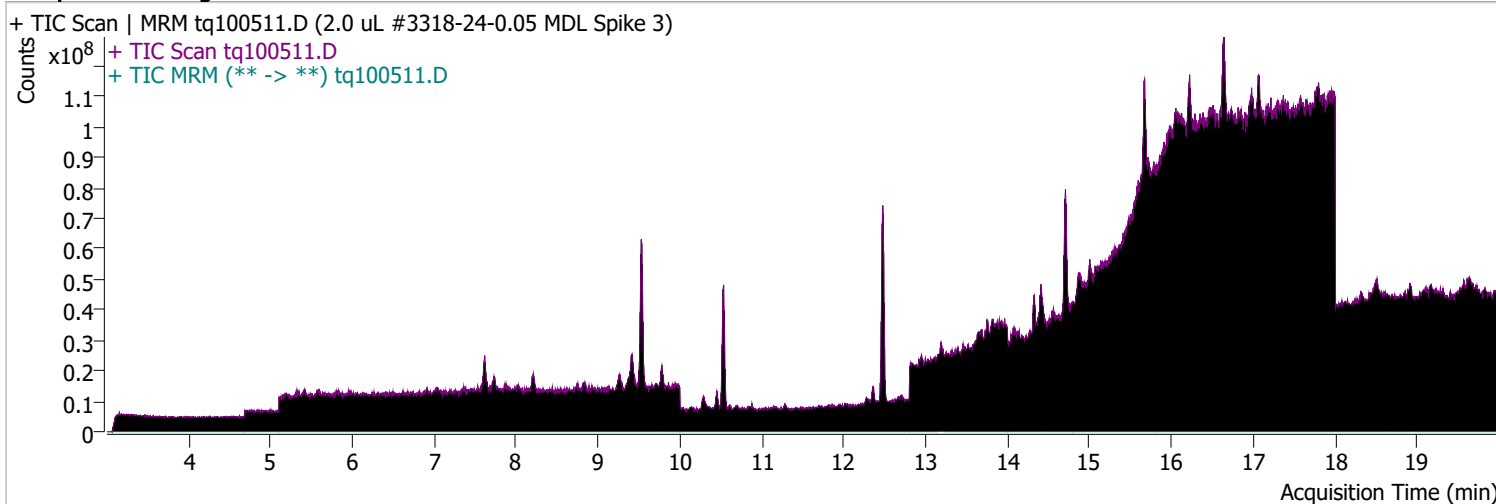
## NETFOSA



# Quantitative Analysis Sample Report

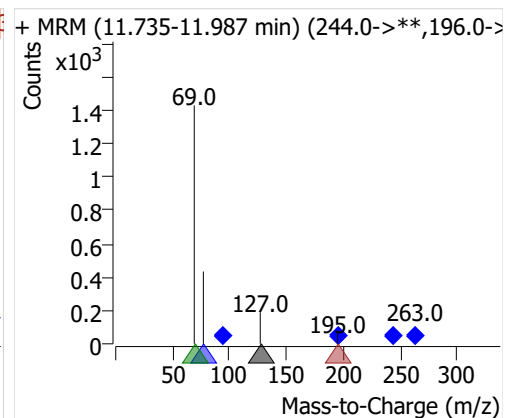
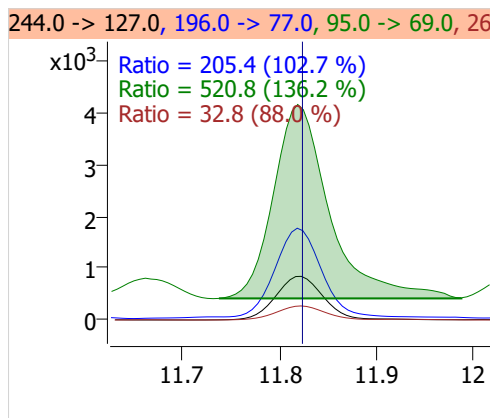
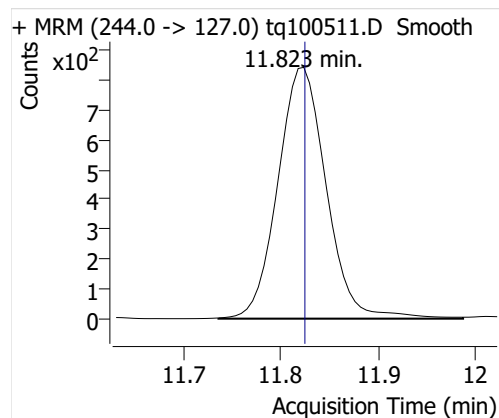
Batch Path	D:\MassHunter\GCMS\1\data\04OCT22\QuantResults\outlier removed MDL spike.batch.bin		
Analysis Time	10/5/2022 8:30 AM	Analyst Name	ES-AREA1\US32_USR_INS22923
Report Time	10/20/2022 2:57:15 PM	Reporter Name	ES-AREA1\US32_USR_INS22923
Last Calib Update	10/3/2022 8:55 AM	Batch State	Processed
Quant Batch Version	10.1	Quant Report Version	10.1
Acq. Time	10/5/2022 1:59 PM	Data File	tq100511.D
Sample Type	QC	Sample Name	2.0 uL #3318-24-0.05 MDL Spike 3
Dilution	1	Acq. Method	tq22m0930marks

## Sample Chromatogram

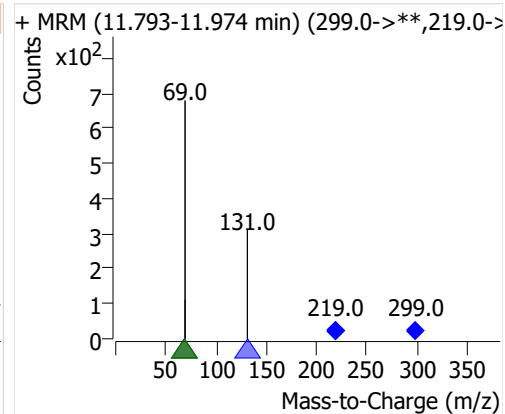
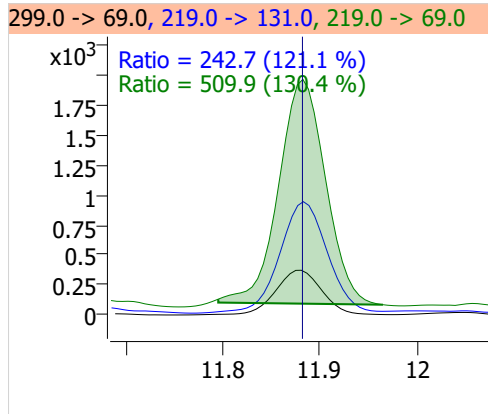
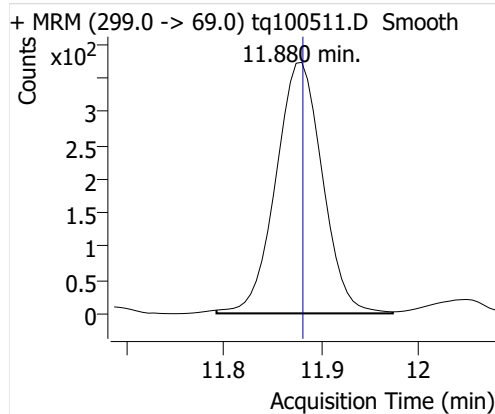


Compound	ISTD	RT	Resp.	ISTD Resp.	Resp. Ratio	Final Conc	Units
4:2 FTOH	6:2 FTOH-C13	11.823	2928	58344	0.0502	0.0913	ng
5:2sFTOH	6:2 FTOH-C13	11.880	1244	58344	0.0213	0.0901	ng
7:2sFTOH	6:2 FTOH-C13	13.190	2658	58344	0.0456	0.0957	ng
6:2 FTOH	6:2 FTOH-C13	13.216	5871	58344	0.1006	0.0997	ng
8:2 FTOH-C13	6:2 FTOH-C13	14.413	21492	58344	0.3684	1.0557	ng
8:2 FTOH	6:2 FTOH-C13	14.413	1349	58344	0.0231	0.0832	ng
10:2 FTOH	6:2 FTOH-C13	15.477	707	58344	0.0121	0.1160	ng
12:2 FTOH	6:2 FTOH-C13	16.457	2436	58344	0.0418	0.1100	ng
NMeFOSA	6:2 FTOH-C13	18.661	2195	58344	0.0376	0.1341	ng
NEtFOSA	6:2 FTOH-C13	18.931	8893	58344	0.1524	0.1242	ng

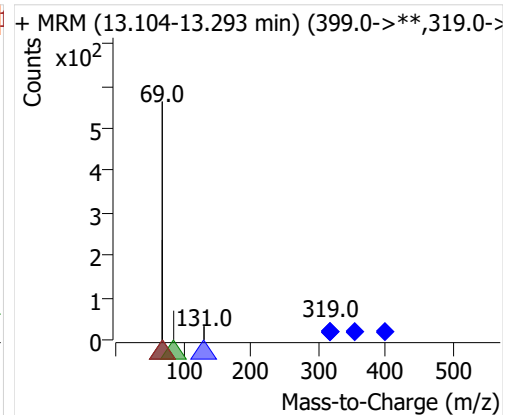
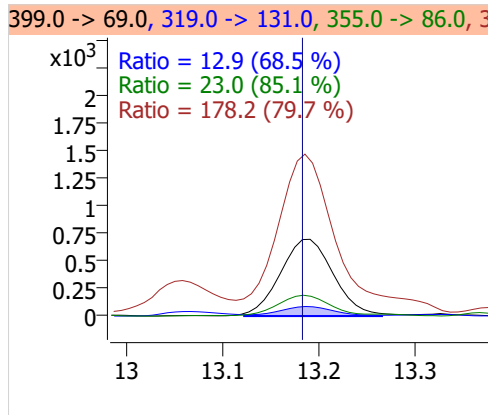
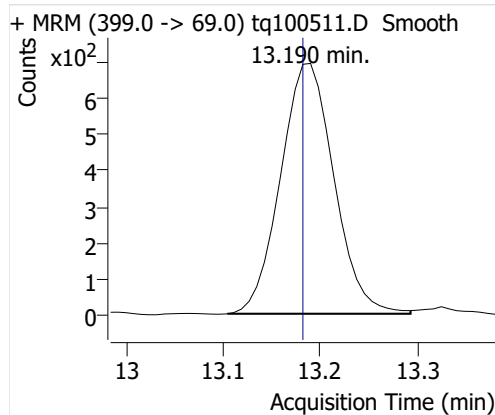
## 4:2 FTOH



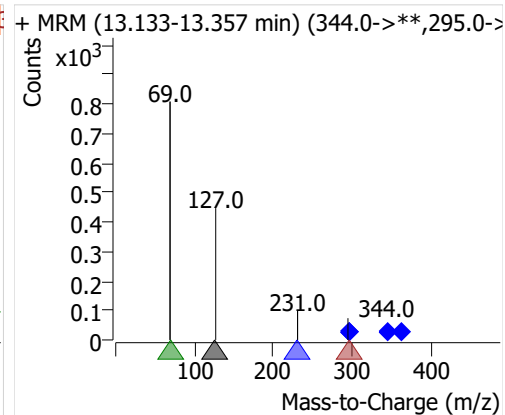
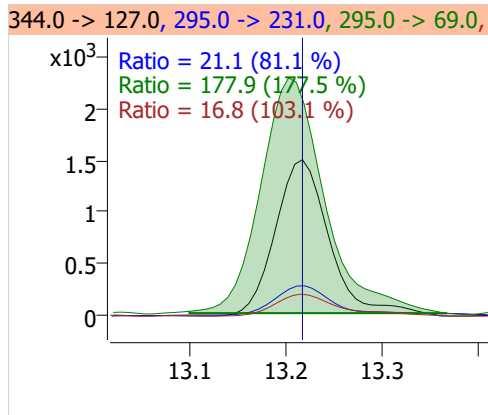
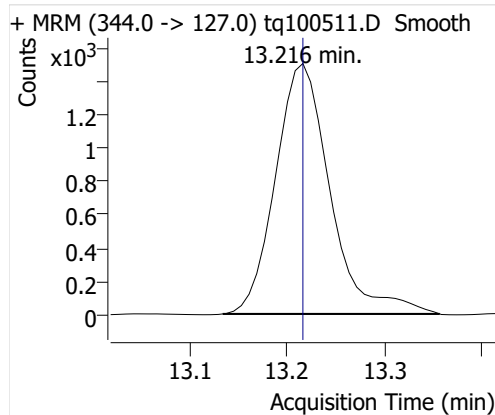
## 5:2sFTOH



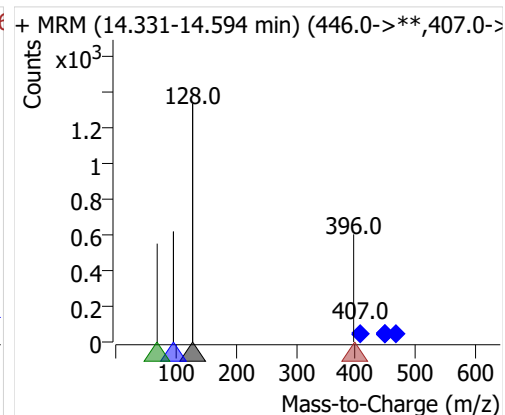
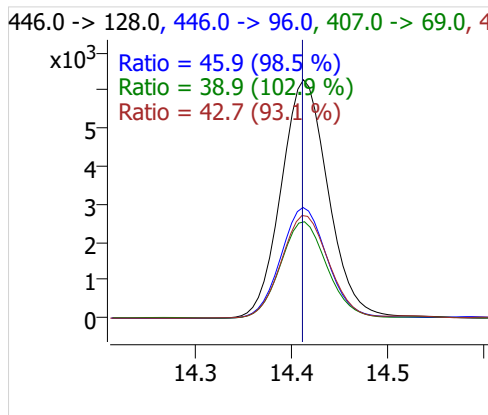
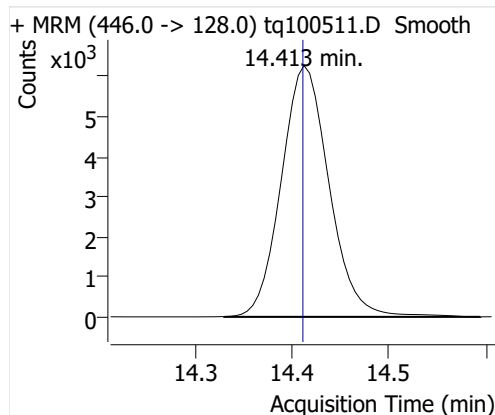
## 7:2sFTOH



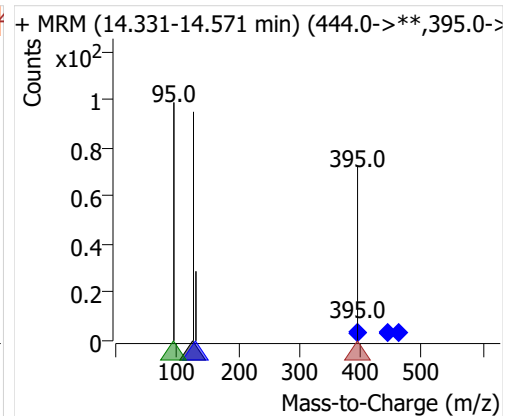
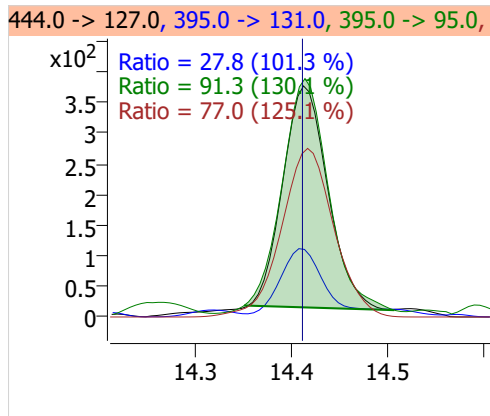
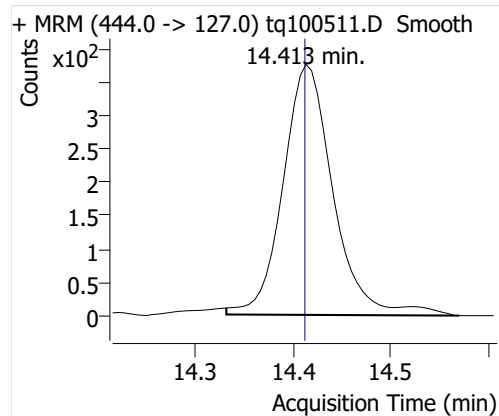
## 6:2 FTOH



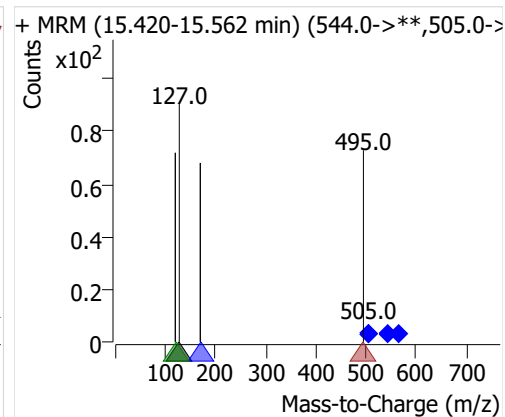
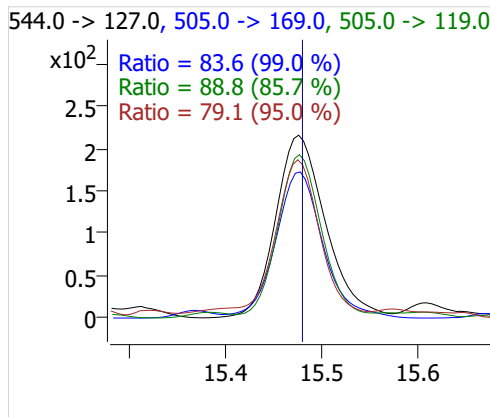
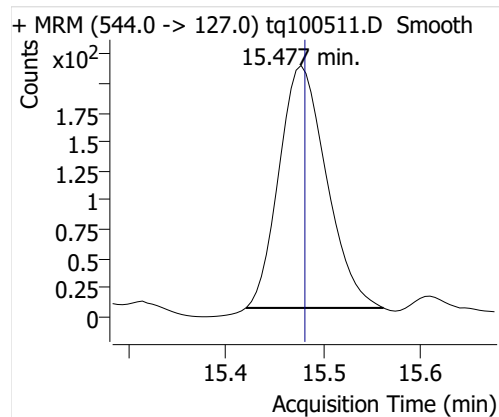
## 8:2 FTOH-C13



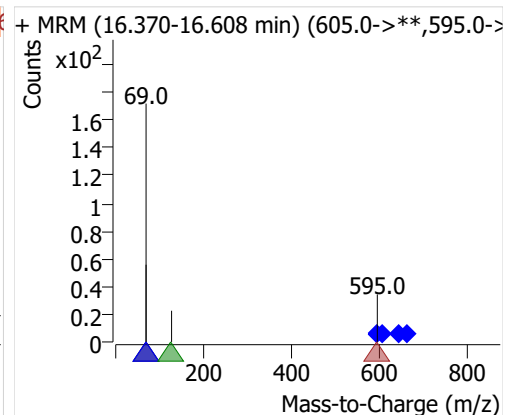
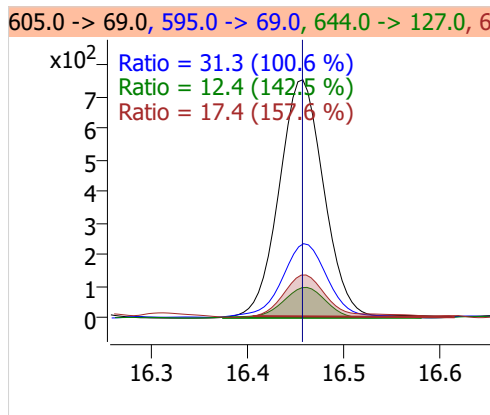
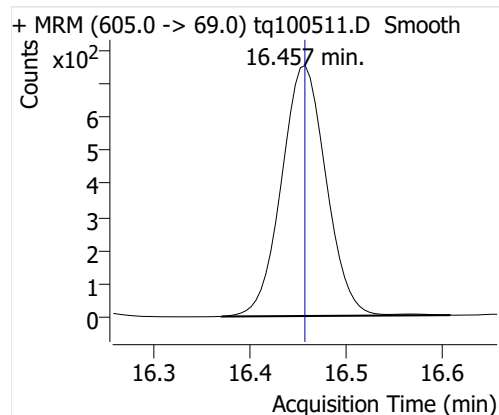
## 8:2 FTOH



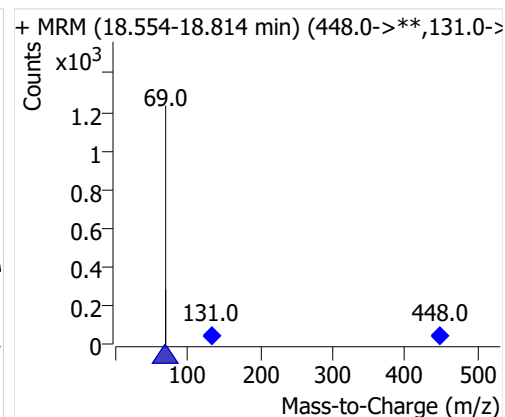
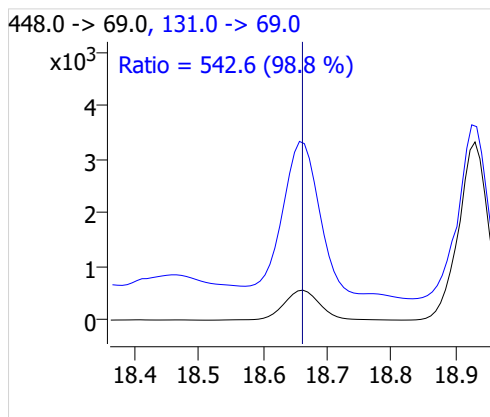
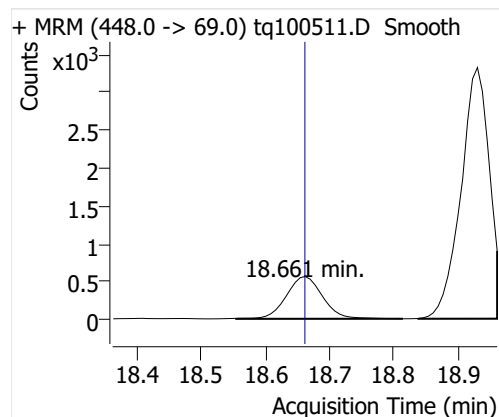
## 10:2 FTOH



## 12:2 FTOH



## NMeFOSA



## NETFOSA

